



Company for production of boilers and heating components
FOS d.o.o. Surdulica



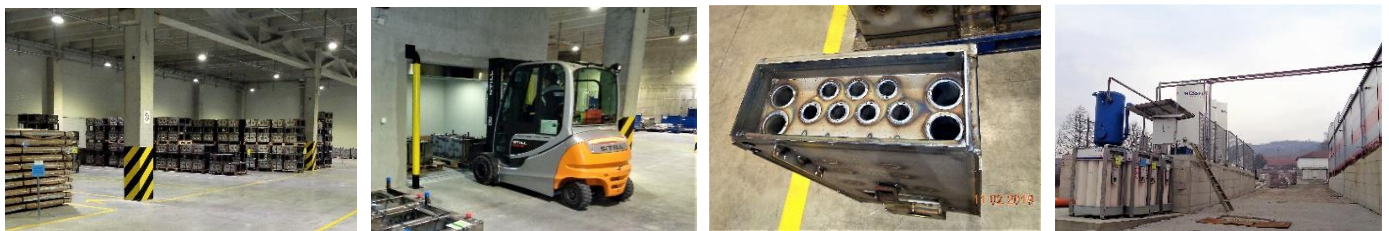
The “FOS“ factory located in Belo Polje, 40km from Vranje, has started with operation in April 2017 as a Welding production unit within the Alfa Plam company. Basic production programme covers central heating boilers on solid fuels and pellets, with the maximum power of 37 kW. With the acquisition of new machines, the factory is today capable of producing all the positions of boiler sheet, and the machines are: “Trumpf” Laser and abkant presses for bending, “Fanuc” and “Yaskawa” welding, and it is planned to open departments for Surface protection and Metal tailoring. The state-of-the-art factory for the production of boilers in the Balkans, with a capacity of up to 30,000 units a year. System for air conditioning of production hall, with the surface of 8.750,4 m², provides all required elements for comfortable air-conditioning.



The “Welding” working unit has 44 cabins for welding and assembly of boilers. Welding machines “Kemppi” contain WiseFusion software that optimizes the welding parameters, central supply with Krysal mixture of gases (Ar+CO₂), welding wire is distributed in 250 kg barrels in all workplaces, welding masks with adjustable photo-gray protection glass, usage of electric forklifters, ...finally, working in these conditions is a real pleasure.



Metal sheet warehouse and Finished goods warehouse are located on the ground floor and the transfer of goods to the Production Station is done by an elevator.



In addition to the basic production program, the factory is able to:

- produce boilers of power up to 55kW, In dimensions of 1000 x 1000 x 500 mm
- cut different positions from steel sheet thickness to 20mm and to bend different positions from steel sheet up to 6mm in thickness
- weld components in Argon environment, Carbon dioxide, and mixture (Ar +18% CO₂)
- thread and cut pipes at angles of diameter to Ø360 mm.



FOS doo Surdulica

Privredno društvo za proizvodnju kotlova i grejnih tela