

# PRODUCT CATALOGUE

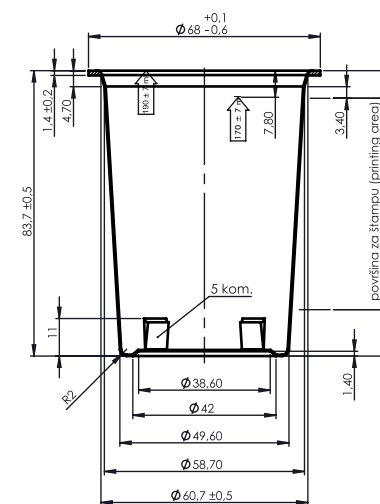
Plastic cups, lids and overlids for sour-dairy product packaging

2024 © All rights reserved



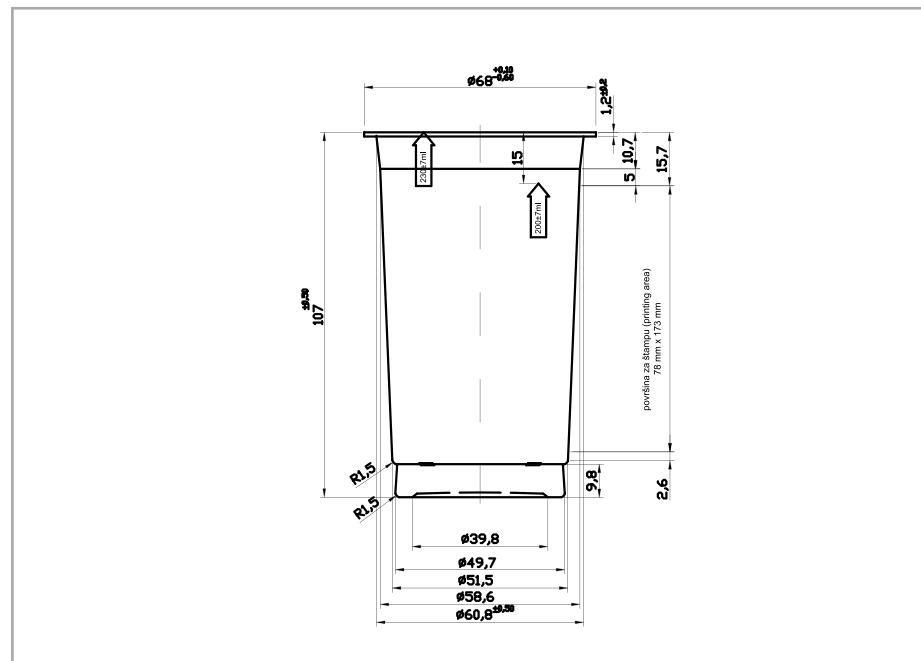
## Art. 204 PP

|                   |                           |                  |
|-------------------|---------------------------|------------------|
| <b>FEATURES</b>   | Shape                     | Round            |
|                   | Volume brimful            | 190 ml ± 7 ml    |
|                   | Volume under lid          | 170 ml ± 7 ml    |
|                   | Height without lid        | 83.7 mm ± 0,5 mm |
|                   | Max.burden on the cup     | 70 N             |
|                   | Diameter                  | Ø 68             |
| <b>WEIGHT</b>     | Cup                       | 4.8 g ± 0,30 g   |
| <b>DECORATION</b> | Cup                       | YES Dryoffset    |
|                   |                           | NO PVC sleeve    |
| <b>PACKING</b>    | Pallet: 1. dimension      | 1200x800         |
|                   | 2. weight                 | 170 kg           |
|                   | 3. height                 | 200 cm           |
|                   | Pcs/pallet:               | 28.350           |
|                   | Pcs/full truck (33 pall): | 935.550          |



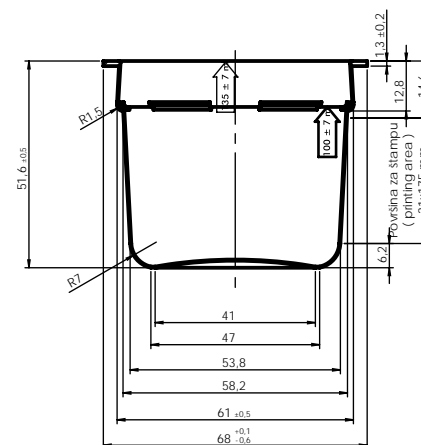
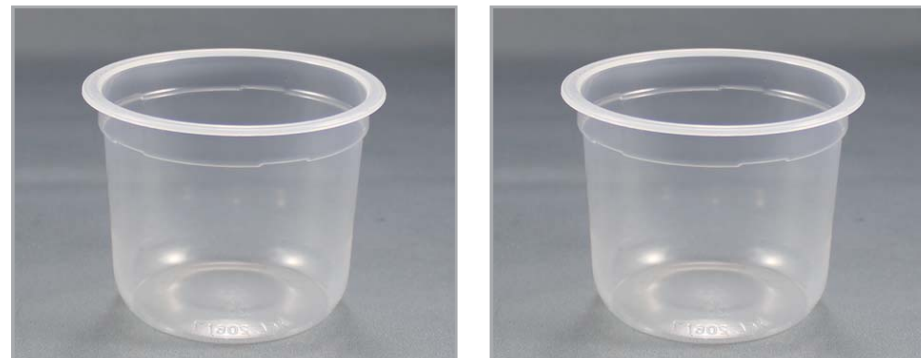
## Art. 205 PP

|                   |                           |                   |
|-------------------|---------------------------|-------------------|
| <b>FEATURES</b>   | Shape                     | Round             |
|                   | Volume brimful            | 230 ml ± 7 ml     |
|                   | Volume under lid          | 200 ml ± 7 ml     |
|                   | Height without lid        | 107.0 mm ± 0,5 mm |
|                   | Max.burden on the cup     | 70 N              |
|                   | Diameter                  | Ø 68              |
| <b>WEIGHT</b>     | Cup                       | 5.6 g ± 0,30 g    |
| <b>DECORATION</b> | Cup                       | YES Dryoffset     |
|                   |                           | YES PVC sleeve    |
| <b>PACKING</b>    | Pallet: 1. dimension      | 1200x800          |
|                   | 2. weight                 | 200 kg            |
|                   | 3. height                 | 200 cm            |
|                   | Pcs/pallet:               | 29.610            |
|                   | Pcs/full truck (33 pall): | 977.130           |



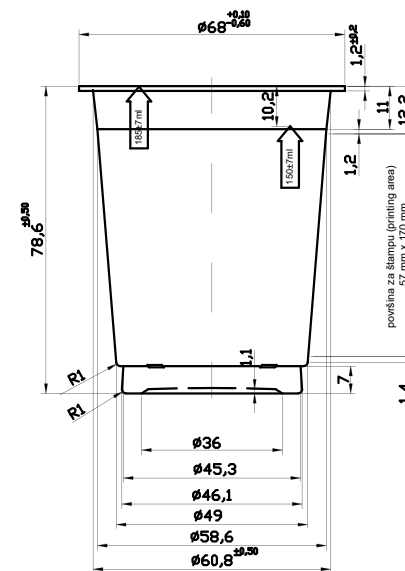
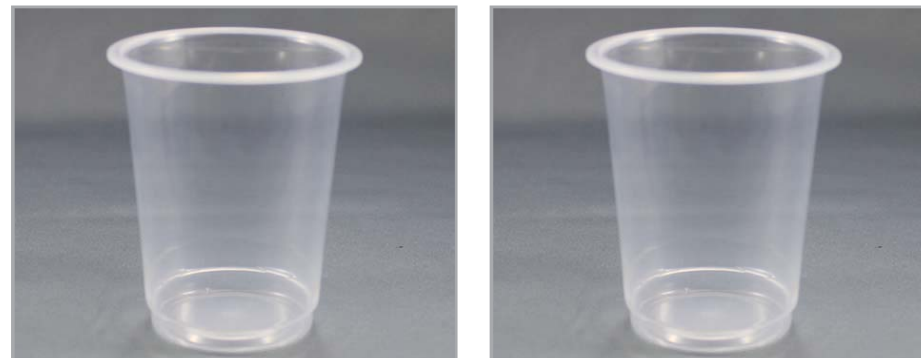
## Art. 206-2 PP

|                   |                           |                      |
|-------------------|---------------------------|----------------------|
| <b>FEATURES</b>   | Shape                     | Round                |
|                   | Volume brimful            | 135 ml $\pm 7$ ml    |
|                   | Volume under lid          | 100 ml $\pm 7$ ml    |
|                   | Height without lid        | 51.6 mm $\pm 0,5$ mm |
|                   | Max.burden on the cup     | 70 N                 |
|                   | Diameter                  | $\varnothing$ 68     |
| <b>WEIGHT</b>     | Cup                       | 3.5 g $\pm 0,30$ g   |
| <b>DECORATION</b> | Cup                       | YES Dryoffset        |
|                   |                           | YES PVC sleeve       |
| <b>PACKING</b>    | Pallet: 1. dimension      | 1200x800             |
|                   | 2. weight                 | 133 kg               |
|                   | 3. height                 | 200 cm               |
|                   | Pcs/pallet:               | 28.350               |
|                   | Pcs/full truck (33 pall): | 935.550              |



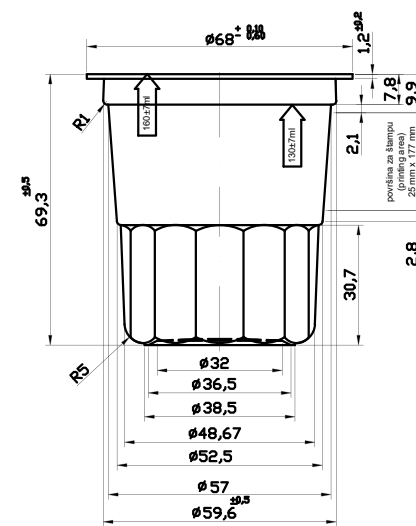
## Art. 207 PP

|                   |                           |                  |
|-------------------|---------------------------|------------------|
| <b>FEATURES</b>   | Shape                     | Round            |
|                   | Volume brimful            | 185 ml ± 7 ml    |
|                   | Volume under lid          | 150 ml ± 7 ml    |
|                   | Height without lid        | 78.6 mm ± 0,5 mm |
|                   | Max.burden on the cup     | 70 N             |
|                   | Diameter                  | Ø 68             |
| <b>WEIGHT</b>     | Cup                       | 4.7 g ± 0,30 g   |
| <b>DECORATION</b> | Cup                       | YES Dryoffset    |
|                   |                           | NO PVC sleeve    |
| <b>PACKING</b>    | Pallet: 1. dimension      | 1200x800         |
|                   | 2. weight                 | 265 kg           |
|                   | 3. height                 | 200 cm           |
|                   | Pcs/pallet:               | 49.140           |
|                   | Pcs/full truck (33 pall): | 1.621.620        |



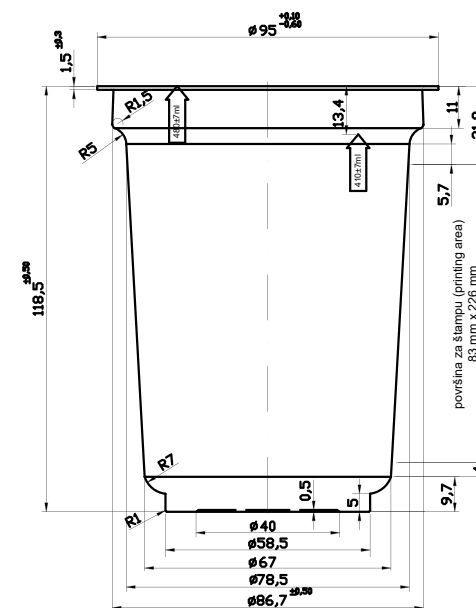
## Art. 208 PP

|                   |                           |                  |
|-------------------|---------------------------|------------------|
| <b>FEATURES</b>   | Shape                     | Round            |
|                   | Volume brimful            | 160 ml ± 7 ml    |
|                   | Volume under lid          | 130 ml ± 7 ml    |
|                   | Height without lid        | 69.3 mm ± 0,5 mm |
|                   | Max.burden on the cup     | 70 N             |
|                   | Diameter                  | Ø 68             |
| <b>WEIGHT</b>     | Cup                       | 4.7 g ± 0,30 g   |
| <b>DECORATION</b> | Cup                       | YES Dryoffset    |
|                   |                           | NO PVC sleeve    |
| <b>PACKING</b>    | Pallet: 1. dimension      | 1200x800         |
|                   | 2. weight                 | 212 kg           |
|                   | 3. height                 | 200 cm           |
|                   | Pcs/pallet:               | 37.800           |
|                   | Pcs/full truck (33 pall): | 1.247,400        |



## Art. 211-2 PP

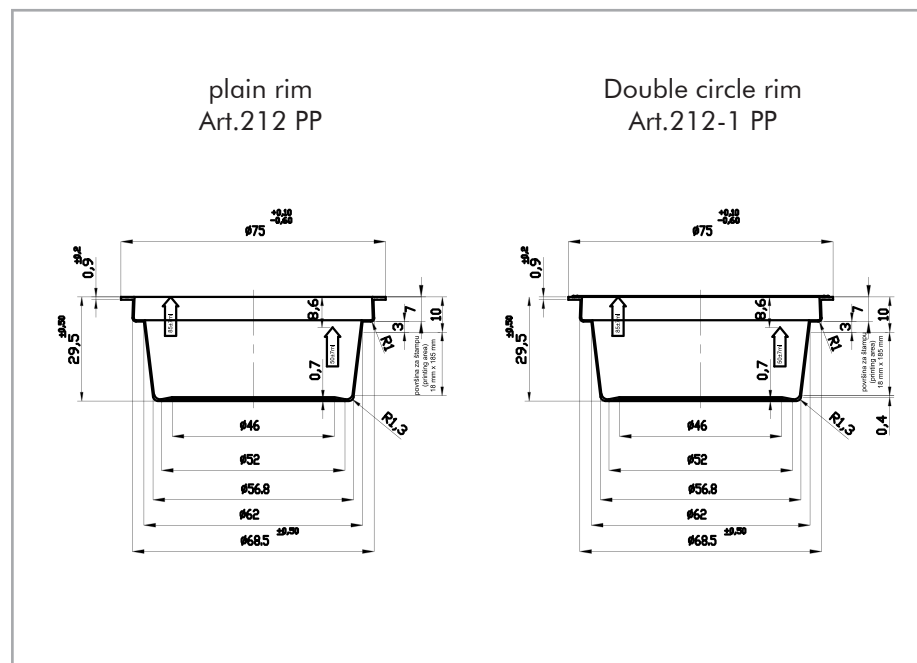
|                   |                           |                                |
|-------------------|---------------------------|--------------------------------|
| <b>FEATURES</b>   | Shape                     | Round                          |
|                   | Volume brimful            | 480 ml ± 7 ml                  |
|                   | Volume under lid          | 410 ml ± 7 ml                  |
|                   | Height without lid        | 118.5 mm ± 0,5 mm              |
|                   | Max.burden on the cup     | 70 N                           |
|                   | Diameter                  | Ø 95                           |
| <b>WEIGHT</b>     | Cup                       | 11.0 g ± 0,50 g                |
| <b>DECORATION</b> | Cup                       | YES Dryoffset<br>NO PVC sleeve |
| <b>PACKING</b>    | Pallet: 1. dimension      | 1200x800                       |
|                   | 2. weight                 | 183 kg                         |
|                   | 3. height                 | 200 cm                         |
|                   | Pcs/pallet:               | 13.536                         |
|                   | Pcs/full truck (33 pall): | 446.688                        |





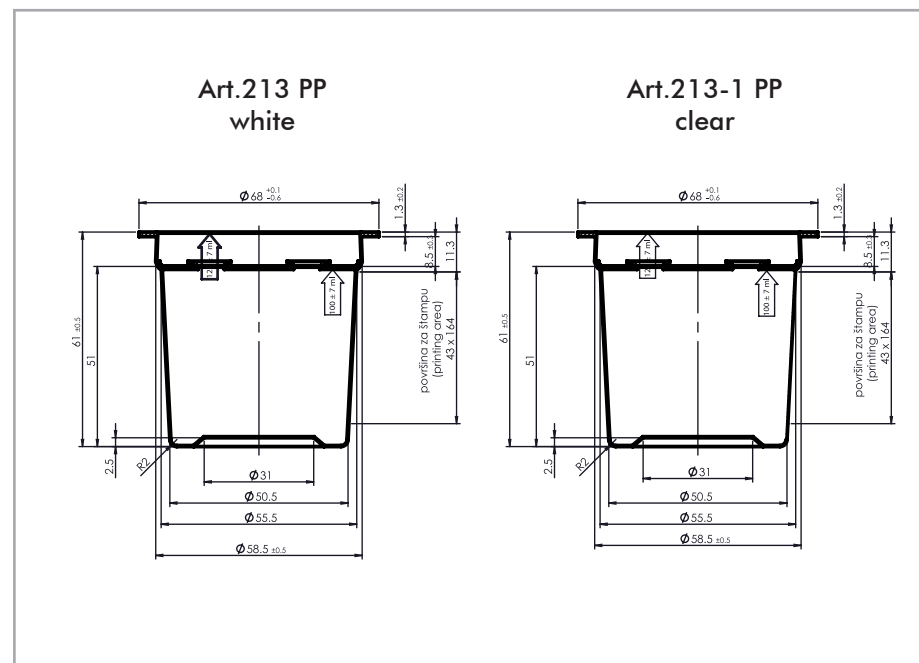
## Art. 212 PP; 212-1 PP double circle rim

|                   |  |              |                              |
|-------------------|--|--------------|------------------------------|
| <b>FEATURES</b>   | Shape  | Round        |                              |
|                   | Volume brimful                                 | 85 ml        | ± 7 ml                       |
|                   | Volume under lid                               | 50 ml        | ± 7 ml                       |
|                   | Height without lid                             | 29.5 mm      | ± 0,5 mm                     |
|                   | Max.burden on the cup<br>Diameter              | 70 N<br>Ø 75 |                              |
| <b>WEIGHT</b>     | Cup  | 4.1 g        | ± 0,30 g                     |
| <b>DECORATION</b> | Cup  | YES          | Dryoffset                    |
|                   |  | NO           | PVC sleeve                   |
| <b>PACKING</b>    | Pallet: 1. dimension<br>2. weight<br>3. height |              | 1200x800<br>186 kg<br>200 cm |
|                   | Pcs/pallet:                                    |              | 36.900                       |
|                   | Pcs/full truck (33 pall):                      |              | 1.217,700                    |



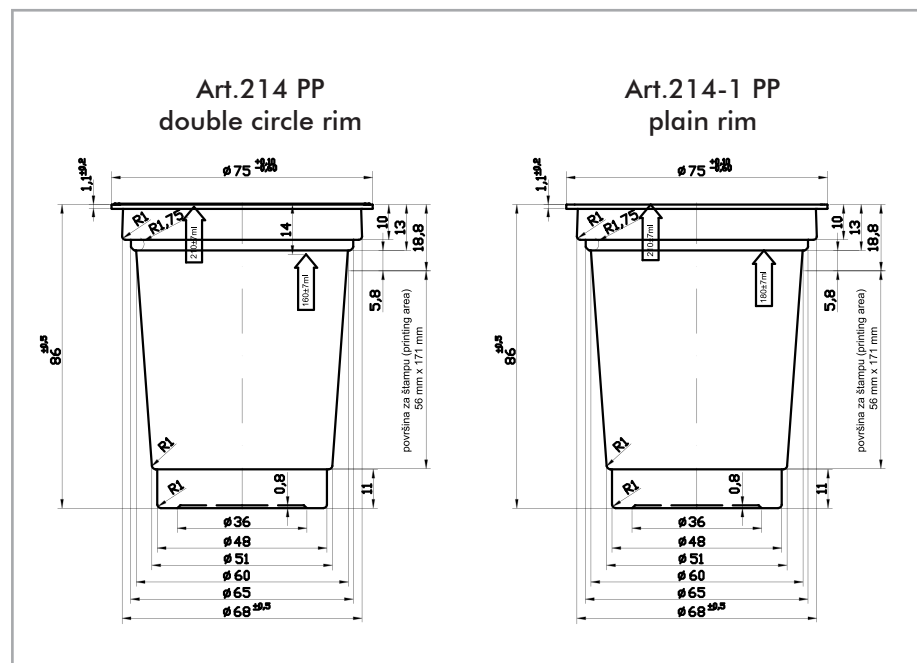
## Art. 213 PP; 213-1 PP

|                   |                           |                  |
|-------------------|---------------------------|------------------|
| <b>FEATURES</b>   | Shape                     | Round            |
|                   | Volume brimful            | 125 ml ± 7 ml    |
|                   | Volume under lid          | 100 ml ± 7 ml    |
|                   | Height without lid        | 61.0 mm ± 0,5 mm |
|                   | Max.burden on the cup     | 70 N             |
|                   | Diameter                  | Ø 68             |
| <b>WEIGHT</b>     | Cup 213                   | 3.8 g ± 0,30 g   |
| <b>DECORATION</b> | Cup                       | YES Dryoffset    |
|                   |                           | YES PVC sleeve   |
| <b>PACKING</b>    | Pallet: 1. dimension      | 1200x800         |
|                   | 2. weight                 | 170 kg           |
|                   | 3. height                 | 200 cm           |
|                   | Pcs/pallet:               | 35.910           |
|                   | Pcs/full truck (33 pall): | 1.185,030        |



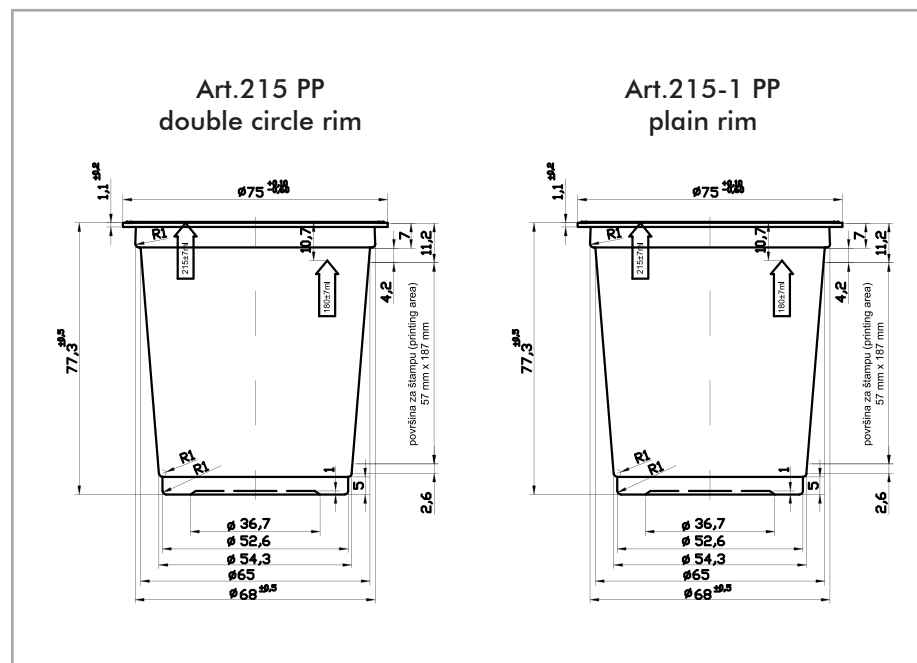
## Art. 214 PP Double circle rim; 214-1 PP ; 214-3 PP

|                   |                           |         |            |
|-------------------|---------------------------|---------|------------|
| <b>FEATURES</b>   | Shape                     | Round   |            |
|                   | Volume brimful            | 210 ml  | ± 7 ml     |
|                   | Volume under lid          | 160 ml  | ± 7 ml     |
|                   | Height without lid        | 86.0 mm | ± 0,5 mm   |
|                   | Max.burden on the cup     | 70 N    |            |
|                   | Diameter                  | Ø 75    |            |
| <b>WEIGHT</b>     | Cup 214, 214-1            | 5.8 g   | ± 0,30 g   |
|                   | Cup 214-3                 | 6.0 g   | ± 0,30 g   |
| <b>DECORATION</b> | Cup                       | YES     | Dryoffset  |
|                   |                           | NO      | PVC sleeve |
| <b>PACKING</b>    | Pallet: 1. dimension      |         | 1200x800   |
|                   | 2. weight                 |         | 167 kg     |
|                   | 3. height                 |         | 200 cm     |
|                   | Pcs/pallet:               |         | 22.950     |
|                   | Pcs/full truck (33 pall): |         | 757.350    |



## Art. 215 PP Double circle rim; 215-1 PP

|                   |                           |                  |
|-------------------|---------------------------|------------------|
| <b>FEATURES</b>   | Shape                     | Round            |
|                   | Volume brimful            | 215 ml ± 7 ml    |
|                   | Volume under lid          | 180 ml ± 7 ml    |
|                   | Height without lid        | 77.3 mm ± 0,5 mm |
|                   | Max.burden on the cup     | 70 N             |
|                   | Diameter                  | Ø 75             |
| <b>WEIGHT</b>     | Cup                       | 5.8 g ± 0,30 g   |
| <b>DECORATION</b> | Cup                       | YES Dryoffset    |
|                   |                           | NO PVC sleeve    |
| <b>PACKING</b>    | Pallet: 1. dimension      | 1200x800         |
|                   | 2. weight                 | 214 kg           |
|                   | 3. height                 | 200 cm           |
|                   | Pcs/pallet:               | 31.050           |
|                   | Pcs/full truck (33 pall): | 1.024,650        |

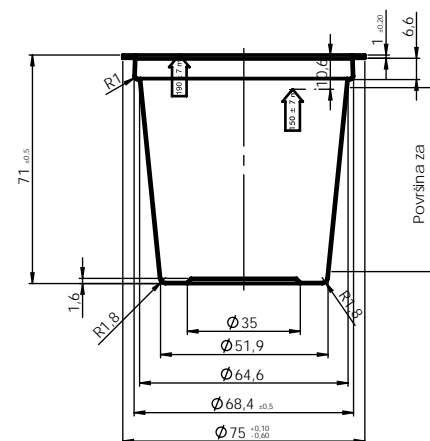


## Art. 216 PP Double circle rim; 216-1 PP

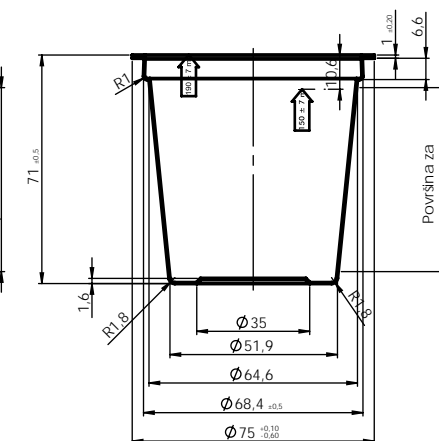
|                   |                           |           |            |
|-------------------|---------------------------|-----------|------------|
| <b>FEATURES</b>   | Shape                     | Round     |            |
|                   | Volume brimful            | 190 ml    | ± 7 ml     |
|                   | Volume under lid          | 150 ml    | ± 7 ml     |
|                   | Height without lid        | 71 mm     | ± 0,5 mm   |
|                   | Max.burden on the cup     | 70 N      |            |
|                   | Diameter                  | Ø 75      |            |
| <b>WEIGHT</b>     | Cup                       | 5.5 g     | ± 0,30 g   |
| <b>DECORATION</b> | Cup                       | YES       | Dryoffset  |
|                   |                           | NO        | PVC sleeve |
| <b>PACKING</b>    | Pallet: 1. dimension      | 1200x800  |            |
|                   | 2. weight                 | 212 kg    |            |
|                   | 3. height                 | 200 cm    |            |
|                   | Pcs/pallet:               | 32.400    |            |
|                   | Pcs/full truck (33 pall): | 1.069,200 |            |



Art.216 PP  
double circle rim



Art.216-1 PP  
plain rim

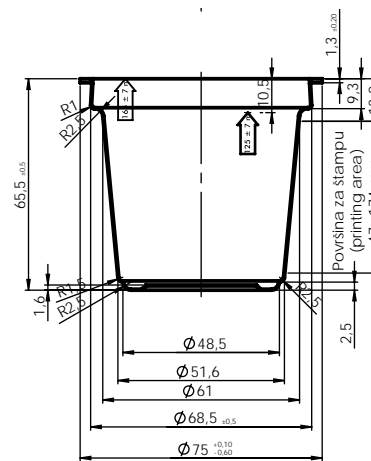


## Art. 217 PP Double circle rim; 217-1 PP

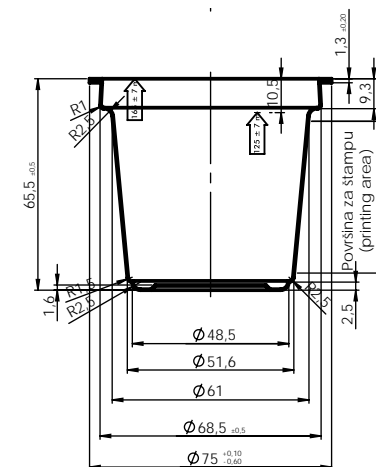
|                   |                           |                  |
|-------------------|---------------------------|------------------|
| <b>FEATURES</b>   | Shape                     | Round            |
|                   | Volume brimful            | 165 ml ± 7 ml    |
|                   | Volume under lid          | 125 ml ± 7 ml    |
|                   | Height without lid        | 65.5 mm ± 0,5 mm |
|                   | Max.burden on the cup     | 70 N             |
|                   | Diameter                  | Ø 75             |
| <b>WEIGHT</b>     | Cup                       | 5.5 g ± 0,30 g   |
| <b>DECORATION</b> | Cup                       | YES Dryoffset    |
|                   |                           | NO PVC sleeve    |
| <b>PACKING</b>    | Pallet: 1. dimension      | 1200x800         |
|                   | 2. weight                 | 183 kg           |
|                   | 3. height                 | 200 cm           |
|                   | Pcs/pallet:               | 27.000           |
|                   | Pcs/full truck (33 pall): | 891.000          |



Art.217 PP  
double circle rim

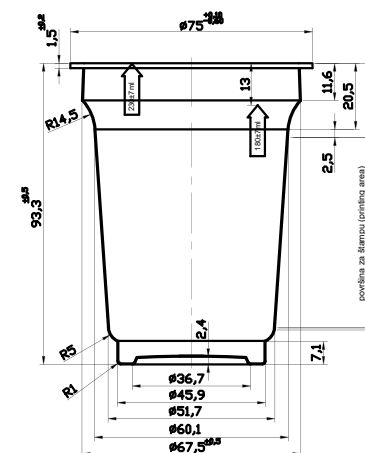


Art.217-1 PP  
plain rim



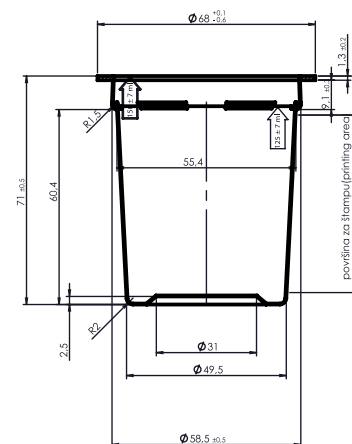
## Art. 219 PP

|                   |  |                              |
|-------------------|--|------------------------------|
| <b>FEATURES</b>   | Shape  | Round                        |
|                   | Volume brimful                                 | 230 ml ± 7 ml                |
|                   | Volume under lid                               | 180 ml ± 7 ml                |
|                   | Height without lid                             | 93.3 mm ± 0,5 mm             |
|                   | Max.burden on the cup<br>Diameter              | 70 N<br>Ø 75                 |
| <b>WEIGHT</b>     | Cup  | 5.9 g ± 0,30 g               |
| <b>DECORATION</b> | Cup  | YES Dryoffset                |
|                   |  | NO PVC sleeve                |
| <b>PACKING</b>    | Pallet: 1. dimension<br>2. weight<br>3. height | 1200x800<br>145 kg<br>200 cm |
|                   | Pcs/pallet:                                    | 18.900                       |
|                   | Pcs/full truck (33 pall):                      | 623.700                      |



## Art. 220-1 PP Clear; 220-2 PP White; 220-3 PP

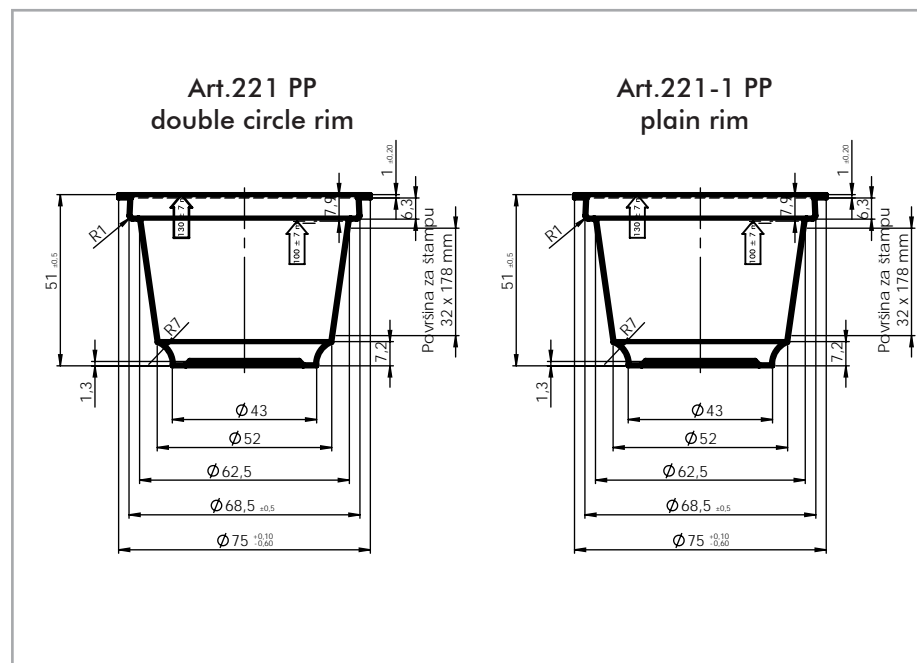
|                   |                           |         |            |
|-------------------|---------------------------|---------|------------|
| <b>FEATURES</b>   | Shape                     | Round   |            |
|                   | Volume brimful            | 150 ml  | ± 7 ml     |
|                   | Volume under lid          | 125 ml  | ± 7 ml     |
|                   | Height without lid        | 71.0 mm | ± 0,5 mm   |
|                   | Max.burden on the cup     | 70 N    |            |
|                   | Diameter                  | Ø 68    |            |
| <b>WEIGHT</b>     | Cup 220-1, 220-2          | 4.5 g   | ± 0,30 g   |
|                   | Cup 220-3                 | 5.0 g   | ± 0,30 g   |
| <b>DECORATION</b> | Cup                       | YES     | Dryoffset  |
|                   |                           | NO      | PVC sleeve |
| <b>PACKING</b>    | Pallet: 1. dimension      |         | 1200x800   |
|                   | 2. weight                 |         | 193 kg     |
|                   | 3. height                 |         | 200 cm     |
|                   | Pcs/pallet:               |         | 35.280     |
|                   | Pcs/full truck (33 pall): |         | 1.164,240  |





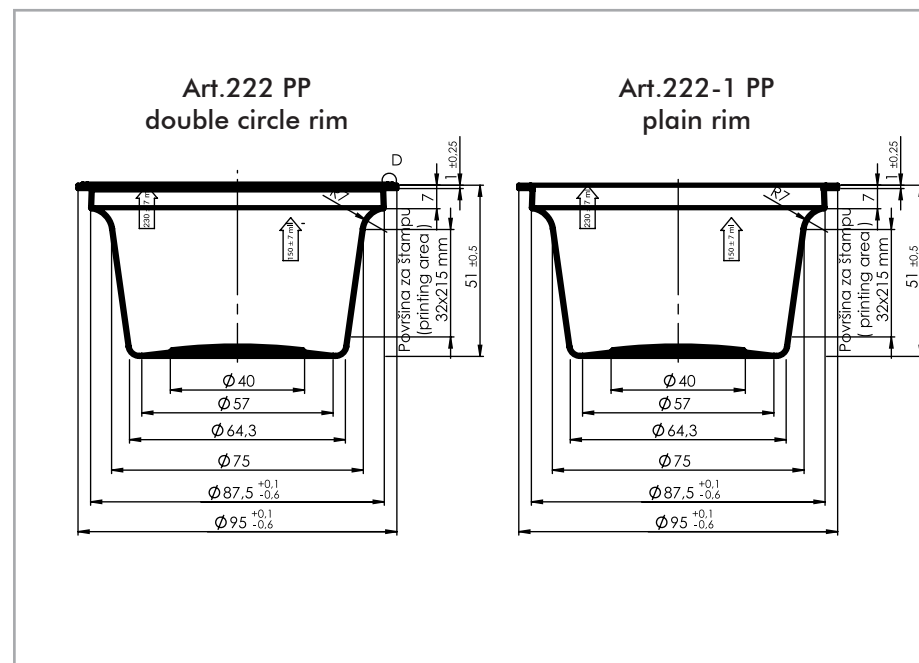
## Art. 221 PP Double circle rim; 221-1 PP

|                   |                           |                  |
|-------------------|---------------------------|------------------|
| <b>FEATURES</b>   | Shape                     | Round            |
|                   | Volume brimful            | 130 ml ± 7 ml    |
|                   | Volume under lid          | 100 ml ± 7 ml    |
|                   | Height without lid        | 51.0 mm ± 0,5 mm |
|                   | Max.burden on the cup     | 70 N             |
|                   | Diameter                  | Ø 75             |
| <b>WEIGHT</b>     | Cup                       | 4.5 g ± 0,30 g   |
| <b>DECORATION</b> | Cup                       | YES Dryoffset    |
|                   |                           | NO PVC sleeve    |
| <b>PACKING</b>    | Pallet: 1. dimension      | 1200x800         |
|                   | 2. weight                 | 198 kg           |
|                   | 3. height                 | 200 cm           |
|                   | Pcs/pallet:               | 36.450           |
|                   | Pcs/full truck (33 pall): | 1.202,850        |



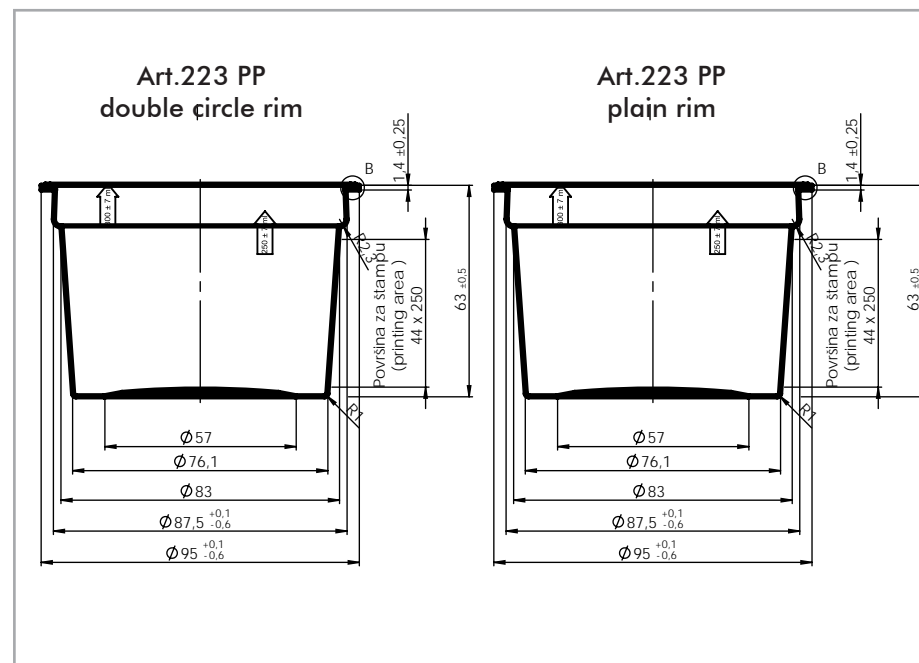
## Art. 222 PP Double circle rim; 222-1 PP; 222-2 PP; 222-3 PP

|                   |  |                                 |
|-------------------|--|---------------------------------|
| <b>FEATURES</b>   | Shape  | Round                           |
|                   | Volume brimful                                 | 230 ml ± 7 ml                   |
|                   | Volume under lid                               | 150 ml ± 7 ml                   |
|                   | Height without lid                             | 51.0 mm ± 0,5 mm                |
|                   | Max.burden on the cup                          | 70 N                            |
| Diameter          | Ø 95   |                                 |
| <b>WEIGHT</b>     | Cup 222, 222-1                                 | 7.0 g ± 0,40 g                  |
|                   | Cup 220-3                                      | 6.0 g ± 0,40 g                  |
| <b>DECORATION</b> | Cup  | YES Dryoffset<br>YES PVC sleeve |
|                   |  |                                 |
| <b>PACKING</b>    | Pallet: 1. dimension<br>2. weight<br>3. height | 1200x800<br>196 kg<br>200 cm    |
|                   | Pcs/pallet:                                    | 23.040                          |
|                   | Pcs/full truck (33 pall):                      | 760.320                         |



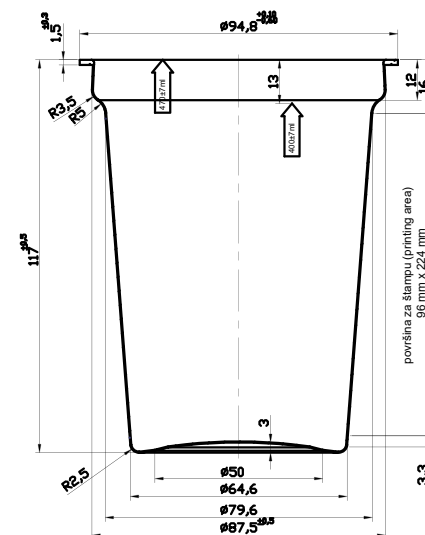
## Art. 223 PP Double circle rim; 223-1 PP; 223-2 PP;

|                   |                           |                  |              |
|-------------------|---------------------------|------------------|--------------|
| <b>FEATURES</b>   | Shape                     | Round            |              |
|                   | Volume brimful            | 300 ml           | $\pm 7$ ml   |
|                   | Volume under lid          | 250 ml           | $\pm 7$ ml   |
|                   | Height without lid        | 63.0 mm          | $\pm 0,5$ mm |
|                   | Max.burden on the cup     | 70 N             |              |
|                   | Diameter                  | $\varnothing 95$ |              |
| <b>WEIGHT</b>     | Cup                       | 9.0 g            | $\pm 0,40$ g |
| <b>DECORATION</b> | Cup                       | YES              | Dryoffset    |
|                   |                           | NO               | PVC sleeve   |
| <b>PACKING</b>    | Pallet: 1. dimension      | 1200x800         |              |
|                   | 2. weight                 | 143 kg           |              |
|                   | 3. height                 | 200 cm           |              |
|                   | Pcs/pallet:               | 12.096           |              |
|                   | Pcs/full truck (33 pall): | 399.168          |              |



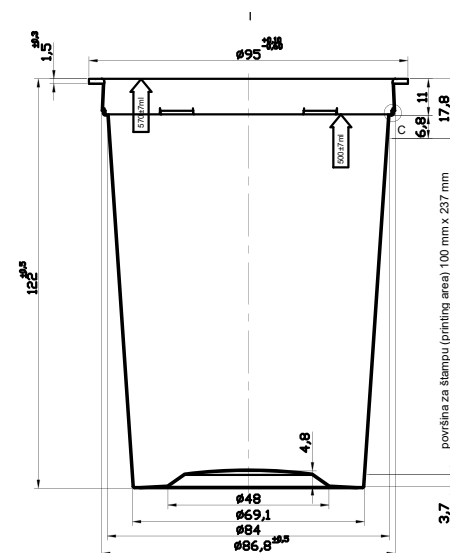
## Art. 224-3 PP

|                   |                           |                   |
|-------------------|---------------------------|-------------------|
| <b>FEATURES</b>   | Shape                     | Round             |
|                   | Volume brimful            | 470 ml ± 7 ml     |
|                   | Volume under lid          | 400 ml ± 7 ml     |
|                   | Height without lid        | 117.0 mm ± 0,5 mm |
|                   | Max.burden on the cup     | 70 N              |
|                   | Diameter                  | Ø 95              |
| <b>WEIGHT</b>     | Cup                       | 11.0 g ± 0,40 g   |
| <b>DECORATION</b> | Cup                       | YES Dryoffset     |
|                   |                           | NO PVC sleeve     |
| <b>PACKING</b>    | Pallet: 1. dimension      | 1200x800          |
|                   | 2. weight                 | 174 kg            |
|                   | 3. height                 | 200 cm            |
|                   | Pcs/pallet:               | 12.672            |
|                   | Pcs/full truck (33 pall): | 418.176           |



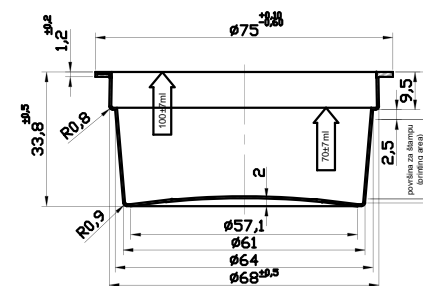
## Art. 225-2 PP; 225-3 PP

|                   |                           |                   |
|-------------------|---------------------------|-------------------|
| <b>FEATURES</b>   | Shape                     | Round             |
|                   | Volume brimful            | 570 ml ± 7 ml     |
|                   | Volume under lid          | 500 ml ± 7 ml     |
|                   | Height without lid        | 122.0 mm ± 0,5 mm |
|                   | Max.burden on the cup     | 70 N              |
|                   | Diameter                  | Ø 95              |
| <b>WEIGHT</b>     | Cup                       | 11.5 g ± 0,50 g   |
| <b>DECORATION</b> | Cup                       | YES Dryoffset     |
|                   |                           | NO PVC sleeve     |
| <b>PACKING</b>    | Pallet: 1. dimension      | 1200x800          |
|                   | 2. weight                 | 193 kg            |
|                   | 3. height                 | 200 cm            |
|                   | Pcs/pallet:               | 13.824            |
|                   | Pcs/full truck (33 pall): | 456.192           |



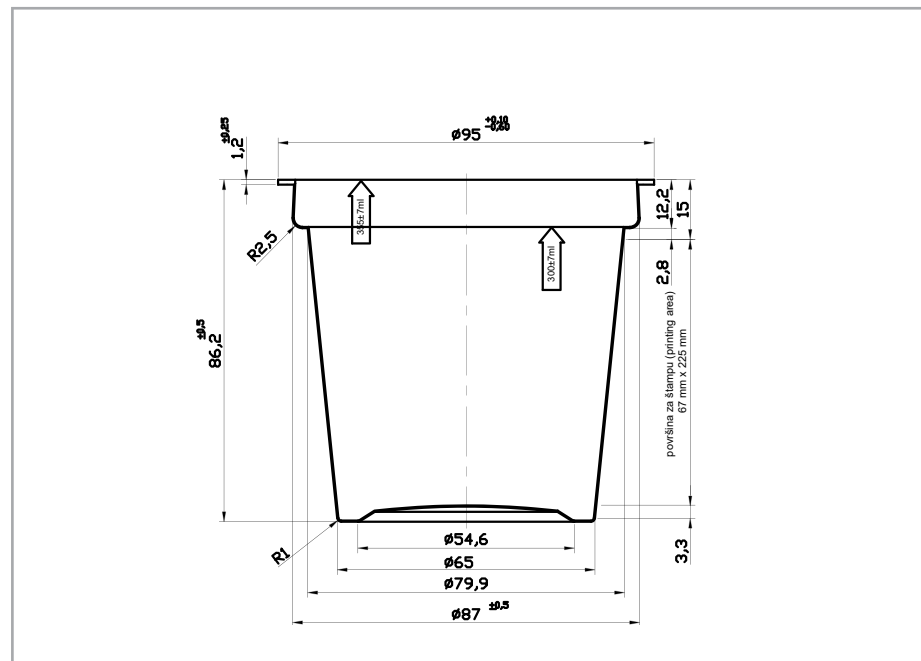
## Art. 226 PP

|                   |                           |          |            |
|-------------------|---------------------------|----------|------------|
| <b>FEATURES</b>   | Shape                     | Round    |            |
|                   | Volume brimful            | 100 ml   | ± 7 ml     |
|                   | Volume under lid          | 70 ml    | ± 7 ml     |
|                   | Height without lid        | 33.8 mm  | ± 0,5 mm   |
|                   | Max.burden on the cup     | 70 N     |            |
|                   | Diameter                  | Ø 75     |            |
| <b>WEIGHT</b>     | Cup                       | 5.30 g   | ± 0,30 g   |
| <b>DECORATION</b> | Cup                       | YES      | Dryoffset  |
|                   |                           | NO       | PVC sleeve |
| <b>PACKING</b>    | Pallet: 1. dimension      | 1200x800 |            |
|                   | 2. weight                 | 182 kg   |            |
|                   | 3. height                 | 200 cm   |            |
|                   | Pcs/pallet:               | 27.900   |            |
|                   | Pcs/full truck (33 pall): | 920.700  |            |



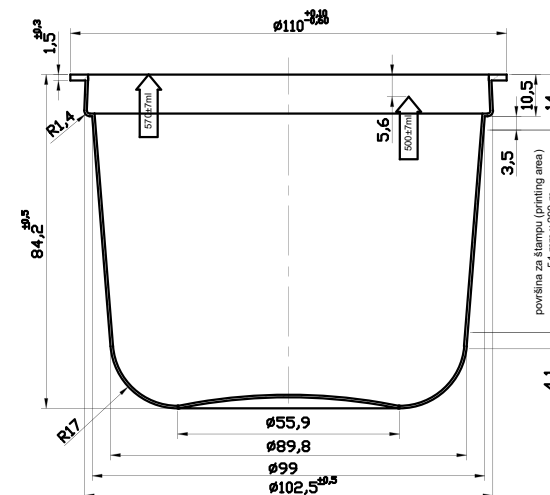
## Art. 227 PP

|                   |                           |                  |
|-------------------|---------------------------|------------------|
| <b>FEATURES</b>   | Shape                     | Round            |
|                   | Volume brimful            | 355 ml ± 7 ml    |
|                   | Volume under lid          | 300 ml ± 7 ml    |
|                   | Height without lid        | 86.2 mm ± 0,5 mm |
|                   | Max.burden on the cup     | 70 N             |
|                   | Diameter                  | Ø 95             |
| <b>WEIGHT</b>     | Cup                       | 9.80 g ± 0,40 g  |
| <b>DECORATION</b> | Cup                       | YES Dryoffset    |
|                   |                           | NO PVC sleeve    |
| <b>PACKING</b>    | Pallet: 1. dimension      | 1200x800         |
|                   | 2. weight                 | 161 kg           |
|                   | 3. height                 | 200 cm           |
|                   | Pcs/pallet:               | 12.960           |
|                   | Pcs/full truck (33 pall): | 427.680          |



## Art. 228-1 PP

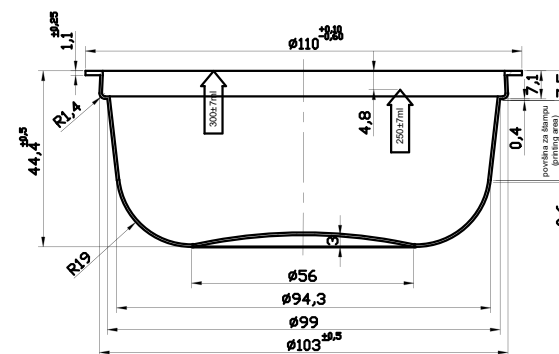
|                   |                           |                  |
|-------------------|---------------------------|------------------|
| <b>FEATURES</b>   | Shape                     | Round            |
|                   | Volume brimful            | 570 ml ± 7 ml    |
|                   | Volume under lid          | 500 ml ± 7 ml    |
|                   | Height without lid        | 84.2 mm ± 0,5 mm |
|                   | Max.burden on the cup     | 70 N             |
|                   | Diameter                  | Ø 110            |
| <b>WEIGHT</b>     | Cup                       | 13.50 g ± 0,50 g |
| <b>DECORATION</b> | Cup                       | YES Dryoffset    |
|                   |                           | NO PVC sleeve    |
| <b>PACKING</b>    | Pallet: 1. dimension      | 1200x800         |
|                   | 2. weight                 | 150 kg           |
|                   | 3. height                 | 200 cm           |
|                   | Pcs/pallet:               | 8.586            |
|                   | Pcs/full truck (33 pall): | 283.338          |





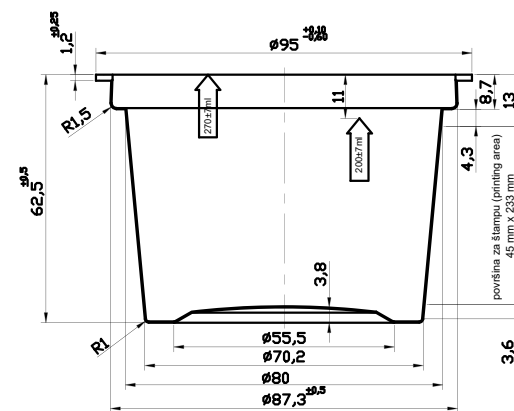
## Art. 229-1 PP

|                   |                           |                  |
|-------------------|---------------------------|------------------|
| <b>FEATURES</b>   | Shape                     | Round            |
|                   | Volume brimful            | 300 ml ± 7 ml    |
|                   | Volume under lid          | 250 ml ± 7 ml    |
|                   | Height without lid        | 44.4 mm ± 0,5 mm |
|                   | Max.burden on the cup     | 70 N             |
|                   | Diameter                  | Ø 110            |
| <b>WEIGHT</b>     | Cup                       | 9.0 g ± 0,40 g   |
| <b>DECORATION</b> | Cup                       | YES Dryoffset    |
|                   |                           | NO PVC sleeve    |
| <b>PACKING</b>    | Pallet: 1. dimension      | 1200x800         |
|                   | 2. weight                 | 165 kg           |
|                   | 3. height                 | 200 cm           |
|                   | Pcs/pallet:               | 14.580           |
|                   | Pcs/full truck (33 pall): | 481.140          |



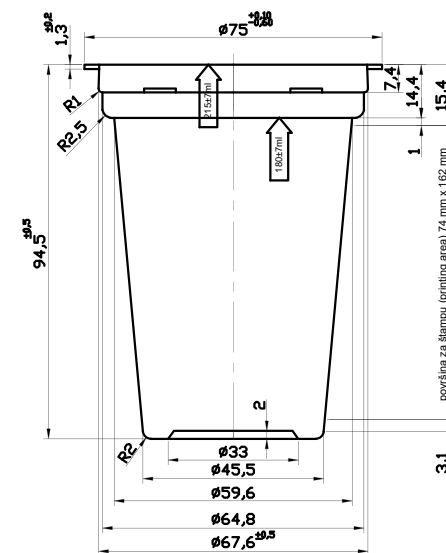
## Art. 230 PP; 230-1 PP

|                   |                           |                  |
|-------------------|---------------------------|------------------|
| <b>FEATURES</b>   | Shape                     | Round            |
|                   | Volume brimful            | 270 ml ± 7 ml    |
|                   | Volume under lid          | 200 ml ± 7 ml    |
|                   | Height without lid        | 62.5 mm ± 0,5 mm |
|                   | Max.burden on the cup     | 70 N             |
|                   | Diameter                  | Ø 95             |
| <b>WEIGHT</b>     | Cup                       | 7.50 g ± 0,40 g  |
| <b>DECORATION</b> | Cup                       | YES Dryoffset    |
|                   |                           | NO PVC sleeve    |
| <b>PACKING</b>    | Pallet: 1. dimension      | 1200x800         |
|                   | 2. weight                 | 181 kg           |
|                   | 3. height                 | 200 cm           |
|                   | Pcs/pallet:               | 19.296           |
|                   | Pcs/full truck (33 pall): | 636.768          |



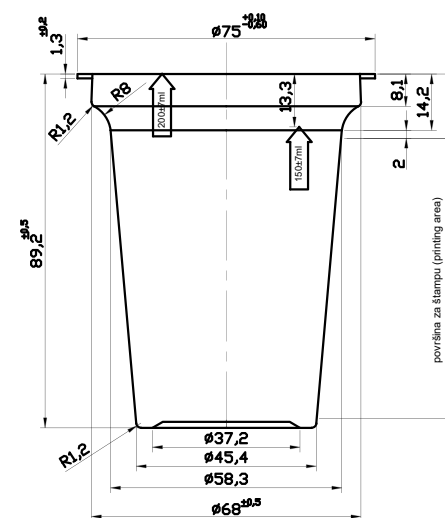
## Art. 231 PP; 231-1 PP

|                   |                           |          |            |
|-------------------|---------------------------|----------|------------|
| <b>FEATURES</b>   | Shape                     | Round    |            |
|                   | Volume brimful            | 215 ml   | ± 7 ml     |
|                   | Volume under lid          | 180 ml   | ± 7 ml     |
|                   | Height without lid        | 94.5 mm  | ± 0,5 mm   |
|                   | Max.burden on the cup     | 70 N     |            |
|                   | Diameter                  | Ø 75     |            |
| <b>WEIGHT</b>     | Cup                       | 5.80 g   | ± 0,30 g   |
| <b>DECORATION</b> | Cup                       | YES      | Dryoffset  |
|                   |                           | NO       | PVC sleeve |
| <b>PACKING</b>    | Pallet: 1. dimension      | 1200x800 |            |
|                   | 2. weight                 | 206 kg   |            |
|                   | 3. height                 | 200 cm   |            |
|                   | Pcs/pallet:               | 29.700   |            |
|                   | Pcs/full truck (33 pall): | 980.100  |            |



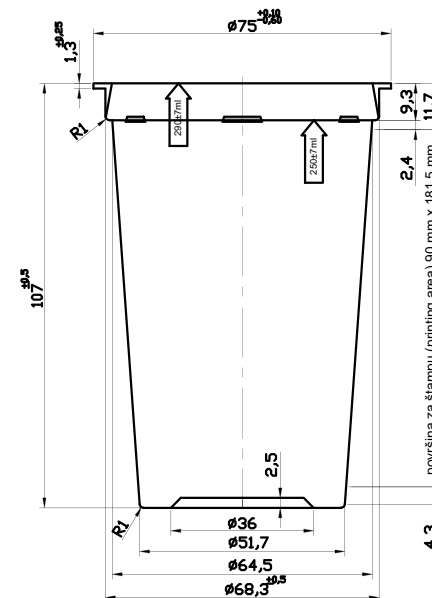
## Art. 232 PP; 232-1 PP; 232-2 PP

|                   |                           |                                |
|-------------------|---------------------------|--------------------------------|
| <b>FEATURES</b>   | Shape                     | Round                          |
|                   | Volume brimful            | 200 ml $\pm 7$ ml              |
|                   | Volume under lid          | 150 ml $\pm 7$ ml              |
|                   | Height without lid        | 89.2 mm $\pm 0,5$ mm           |
|                   | Max.burden on the cup     | 70 N                           |
|                   | Diameter                  | $\varnothing 75$               |
| <b>WEIGHT</b>     | Cup                       | 5.60 g $\pm 0,30$ g            |
|                   | Cup                       | 4.80 g $\pm 0,30$ g            |
| <b>DECORATION</b> | Cup                       | YES Dryoffset<br>NO PVC sleeve |
|                   |                           |                                |
| <b>PACKING</b>    | Pallet: 1. dimension      | 1200x800                       |
|                   | 2. weight                 | 200 kg                         |
|                   | 3. height                 | 200 cm                         |
|                   | Pcs/pallet:               | 29.700                         |
|                   | Pcs/full truck (33 pall): | 980.100                        |



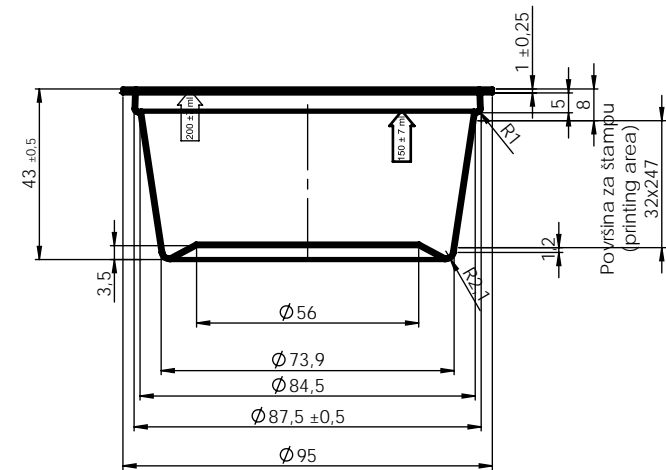
## Art. 233 PP; 233-1 PP; 233-5 PP

|                   |                           |                                |
|-------------------|---------------------------|--------------------------------|
| <b>FEATURES</b>   | Shape                     | Round                          |
|                   | Volume brimful            | 290 ml ± 7 ml                  |
|                   | Volume under lid          | 250 ml ± 7 ml                  |
|                   | Height without lid        | 107.0 mm ± 0,5 mm              |
|                   | Max.burden on the cup     | 70 N                           |
|                   | Diameter                  | Ø 75                           |
| <b>WEIGHT</b>     | Cup                       | 7.50 g ± 0,40 g                |
|                   | Cup                       | 6.50 g ± 0,40 g                |
| <b>DECORATION</b> | Cup                       | YES Dryoffset<br>NO PVC sleeve |
|                   |                           |                                |
| <b>PACKING</b>    | Pallet: 1. dimension      | 1200x800                       |
|                   | 2. weight                 | 230 kg                         |
|                   | 3. height                 | 200 cm                         |
|                   | Pcs/pallet:               | 26.100                         |
|                   | Pcs/full truck (33 pall): | 861.300                        |



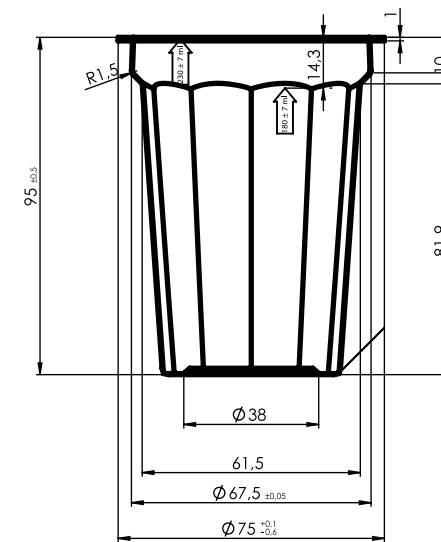
## Art. 235 PP - under development

|                   |  |   |
|-------------------|--|---|
| <b>FEATURES</b>   | Shape  | Round                                   |
|                   | Volume brimful                                 | 200 ml $\pm 7$ ml                       |
|                   | Volume under lid                               | 150 ml $\pm 7$ ml                       |
|                   | Height without lid                             | 43.0 mm $\pm 0,5$ mm                    |
|                   | Max.burden on the cup<br>Diameter              | 70 N<br>$\varnothing 95$                |
| <b>WEIGHT</b>     | Cup  | 7.50 g $\pm 0,40$ g                     |
| <b>DECORATION</b> | Cup  | YES Dryoffset                           |
|                   |  | YES PVC sleeve                          |
| <b>PACKING</b>    | Pallet: 1. dimension<br>2. weight<br>3. height | 1200x800<br>no data available<br>200 cm |
|                   | Pcs/pallet:                                    | no data available                       |
|                   | Pcs/full truck (33 pall):                      | no data available                       |



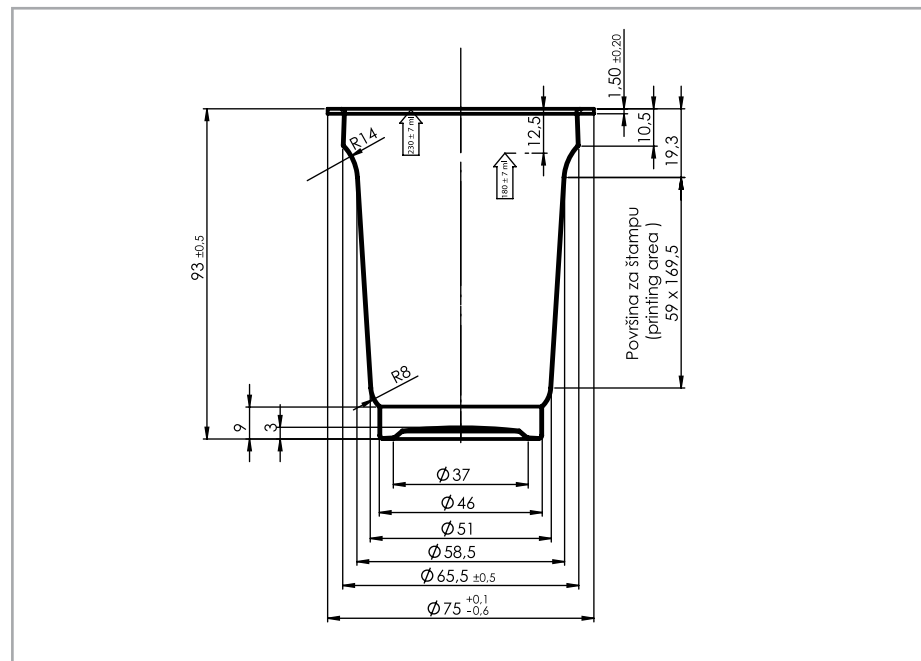
## Art. 238 PP PINK; 238-1 PP BEIGE; 232-2 PP WHITE

|                   |                           |                  |              |
|-------------------|---------------------------|------------------|--------------|
| <b>FEATURES</b>   | Shape                     | Round            |              |
|                   | Volume brimful            | 230 ml           | $\pm 7$ ml   |
|                   | Volume under lid          | 180 ml           | $\pm 7$ ml   |
|                   | Height without lid        | 95.0 mm          | $\pm 0,5$ mm |
|                   | Max.burden on the cup     | 70 N             |              |
|                   | Diameter                  | $\varnothing 75$ |              |
| <b>WEIGHT</b>     | Cup                       | 6.50 g           | $\pm 0,40$ g |
| <b>DECORATION</b> | Cup                       | NO               | Dryoffset    |
|                   |                           | NO               | PVC sleeve   |
| <b>PACKING</b>    | Pallet: 1. dimension      |                  | 1200x800     |
|                   | 2. weight                 |                  | 180 kg       |
|                   | 3. height                 |                  | 200 cm       |
|                   | Pcs/pallet:               |                  | 22.500       |
|                   | Pcs/full truck (33 pall): |                  | 742.500      |



## Art. 243 PP

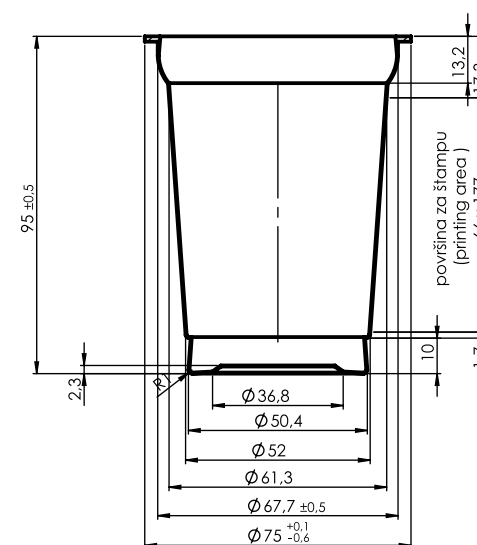
|                   |                                   |  |
|-------------------|-----------------------------------|--|
| <b>FEATURES</b>   | Shape                             | Round  |
|                   | Volume brimful                    | 230 ml ± 7 ml                                  |
|                   | Volume under lid                  | 180 ml ± 7 ml                                  |
|                   | Height without lid                | 95.0 mm ± 0,5 mm                               |
|                   | Max.burden on the cup<br>Diameter | 70 N<br>Ø 75                                   |
| <b>WEIGHT</b>     | Cup                               | 5.90 g ± 0,30 g                                |
| <b>DECORATION</b> | Cup                               | YES Dryoffset<br>NO PVC sleeve                 |
|                   | <b>PACKING</b>                    | Pallet: 1. dimension<br>2. weight<br>3. height |
|                   | Pcs/pallet:                       | 22.050   |
|                   | Pcs/full truck (33 pall):         | 727.650  |





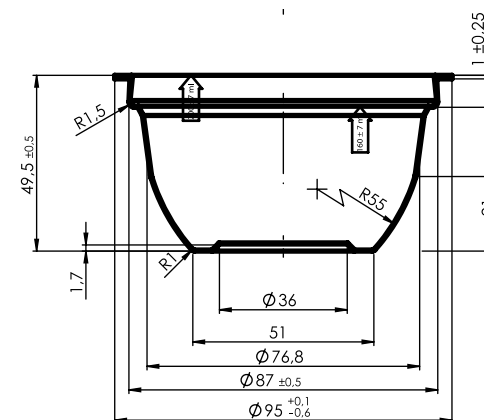
## Art. 244 PP

|                   |                           |                  |              |
|-------------------|---------------------------|------------------|--------------|
| <b>FEATURES</b>   | Shape                     | Round            |              |
|                   | Volume brimful            | 300 ml           | $\pm 7$ ml   |
|                   | Volume under lid          | 200 ml           | $\pm 7$ ml   |
|                   | Height without lid        | 95.0 mm          | $\pm 0,5$ mm |
|                   | Max.burden on the cup     | 70 N             |              |
|                   | Diameter                  | $\varnothing 75$ |              |
| <b>WEIGHT</b>     | Cup                       | 7.50 g           | $\pm 0,40$ g |
| <b>DECORATION</b> | Cup                       | YES              | Dryoffset    |
|                   |                           | NO               | PVC sleeve   |
| <b>PACKING</b>    | Pallet: 1. dimension      |                  | 1200x800     |
|                   | 2. weight                 |                  | 196 kg       |
|                   | 3. height                 |                  | 200 cm       |
|                   | Pcs/pallet:               |                  | 21.600       |
|                   | Pcs/full truck (33 pall): |                  | 712.800      |



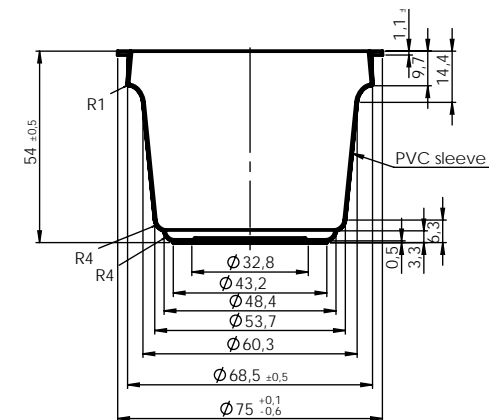
## Art. 245 PP

|                   |                           |                  |              |
|-------------------|---------------------------|------------------|--------------|
| <b>FEATURES</b>   | Shape                     | Round            |              |
|                   | Volume brimful            | 200 ml           | $\pm 7$ ml   |
|                   | Volume under lid          | 160 ml           | $\pm 7$ ml   |
|                   | Height without lid        | 49.5 mm          | $\pm 0,5$ mm |
|                   | Max.burden on the cup     | 70 N             |              |
|                   | Diameter                  | $\varnothing 95$ |              |
| <b>WEIGHT</b>     | Cup                       | 7.50 g           | $\pm 0,40$ g |
| <b>DECORATION</b> | Cup                       | NO               | Dryoffset    |
|                   |                           | YES              | PVC sleeve   |
| <b>PACKING</b>    | Pallet: 1. dimension      | 1200x800         |              |
|                   | 2. weight                 | 256 kg           |              |
|                   | 3. height                 | 200 cm           |              |
|                   | Pcs/pallet:               | 29.700           |              |
|                   | Pcs/full truck (33 pall): | 980.100          |              |



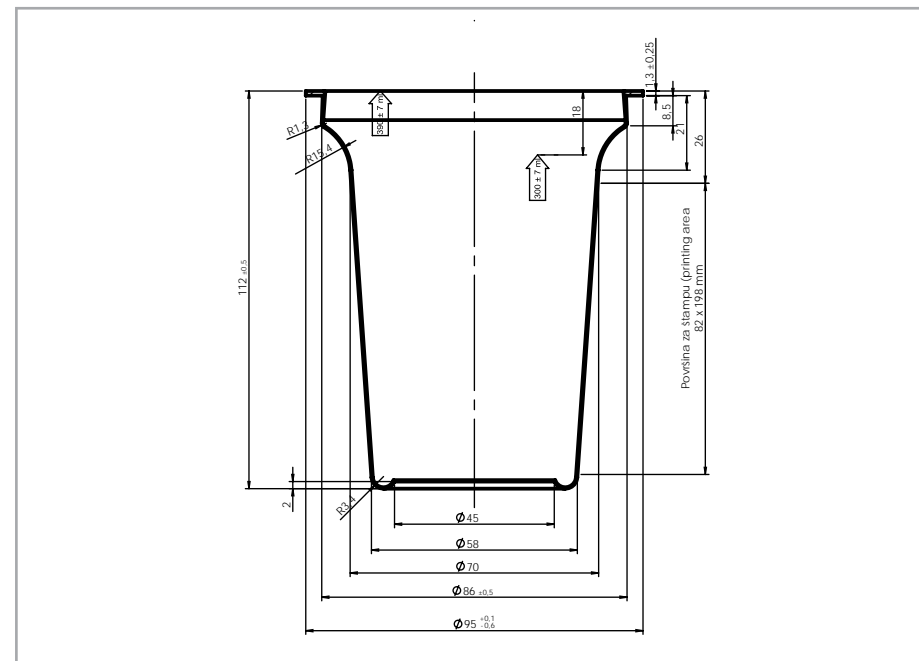
## Art. 246 PP; 246-1 PP; 246-2 PP

|                   |                           |                                 |
|-------------------|---------------------------|---------------------------------|
| <b>FEATURES</b>   | Shape                     | Round                           |
|                   | Volume brimful            | 140 ml ± 7 ml                   |
|                   | Volume under lid          | 100 ml ± 7 ml                   |
|                   | Height without lid        | 54.0 mm ± 0,5 mm                |
|                   | Max.burden on the cup     | 70 N                            |
|                   | Diameter                  | Ø 75                            |
| <b>WEIGHT</b>     | Cup 246-1                 | 5.50 g ± 0,40 g                 |
|                   | Cup 246-2                 | 6.00 g ± 0,40 g                 |
| <b>DECORATION</b> | Cup                       | YES Dryoffset<br>YES PVC sleeve |
|                   |                           |                                 |
| <b>PACKING</b>    | Pallet: 1. dimension      | 1200x800                        |
|                   | 2. weight                 | 185 kg                          |
|                   | 3. height                 | 200 cm                          |
|                   | Pcs/pallet:               | 25.200                          |
|                   | Pcs/full truck (33 pall): | 831.600                         |



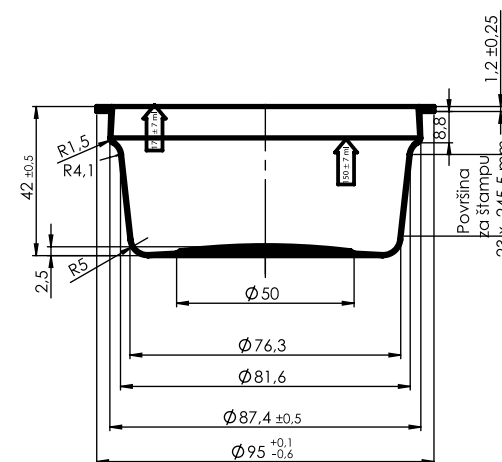
## Art. 247 PP; 247-1 PP

|                   |                           |                                |
|-------------------|---------------------------|--------------------------------|
| <b>FEATURES</b>   | Shape                     | Round                          |
|                   | Volume brimful            | 390 ml ± 7 ml                  |
|                   | Volume under lid          | 160 ml ± 7 ml                  |
|                   | Height without lid        | 112.0 mm ± 0,5 mm              |
|                   | Max.burden on the cup     | 70 N                           |
|                   | Diameter                  | Ø 95                           |
| <b>WEIGHT</b>     | Cup 247                   | 9.50 g ± 0,40 g                |
|                   | Cup 247-1                 | 8.00 g ± 0,40 g                |
| <b>DECORATION</b> | Cup                       | YES Dryoffset<br>NO PVC sleeve |
|                   |                           |                                |
| <b>PACKING</b>    | Pallet: 1. dimension      | 1200x800                       |
|                   | 2. weight                 | 165 kg                         |
|                   | 3. height                 | 200 cm                         |
|                   | Pcs/pallet:               | 13.824                         |
|                   | Pcs/full truck (33 pall): | 456.192                        |



## Art. 248 PP; 248-1 PP

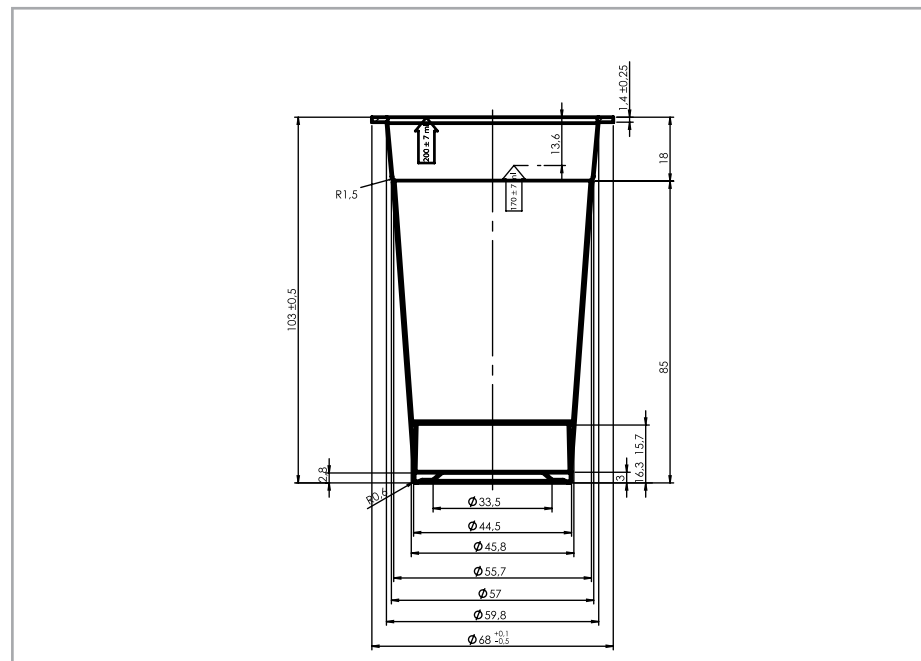
|                   |                           |                  |              |
|-------------------|---------------------------|------------------|--------------|
| <b>FEATURES</b>   | Shape                     | Round            |              |
|                   | Volume brimful            | 175 ml           | $\pm 7$ ml   |
|                   | Volume under lid          | 150 ml           | $\pm 7$ ml   |
|                   | Height without lid        | 42.0 mm          | $\pm 0,5$ mm |
|                   | Max.burden on the cup     | 70 N             |              |
|                   | Diameter                  | $\varnothing 95$ |              |
| <b>WEIGHT</b>     | Cup 248                   | 7.00 g           | $\pm 0,40$ g |
|                   | Cup 248-1                 | 6.00 g           | $\pm 0,40$ g |
| <b>DECORATION</b> | Cup                       | YES              | Dryoffset    |
|                   |                           | YES              | PVC sleeve   |
| <b>PACKING</b>    | Pallet: 1. dimension      |                  | 1200x800     |
|                   | 2. weight                 |                  | 149 kg       |
|                   | 3. height                 |                  | 200 cm       |
|                   | Pcs/pallet:               |                  | 16.416       |
|                   | Pcs/full truck (33 pall): |                  | 541.728      |





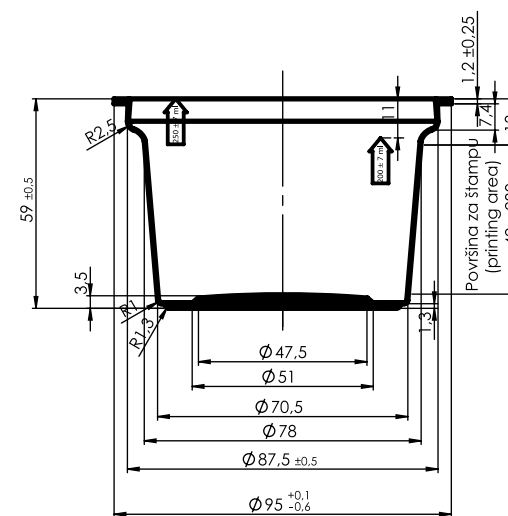
## Art. 250 PP

|                   |                           |                   |
|-------------------|---------------------------|-------------------|
| <b>FEATURES</b>   | Shape                     | Round             |
|                   | Volume brimful            | 200 ml ± 7 ml     |
|                   | Volume under lid          | 170 ml ± 7 ml     |
|                   | Height without lid        | 103.0 mm ± 0,5 mm |
|                   | Max.burden on the cup     | 70 N              |
|                   | Diameter                  | Ø 68              |
| <b>WEIGHT</b>     | Cup                       | 4.90 g ± 0,40 g   |
| <b>DECORATION</b> | Cup                       | NO Dryoffset      |
|                   |                           | YES Karton sleeve |
| <b>PACKING</b>    | Pallet: 1. dimension      | 1200x800          |
|                   | 2. weight                 | 130 kg            |
|                   | 3. height                 | 200 cm            |
|                   | Pcs/pallet:               | 19.530            |
|                   | Pcs/full truck (33 pall): | 644.490           |



## Art. 251 PP

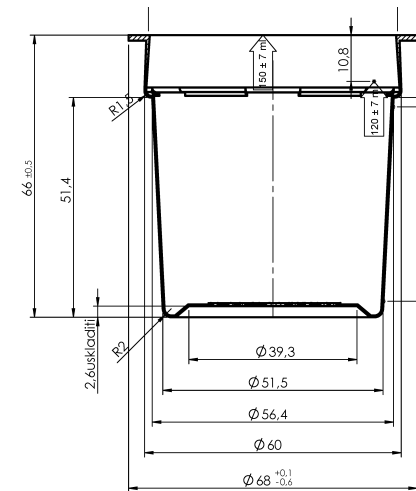
|                   |                           |                      |
|-------------------|---------------------------|----------------------|
| <b>FEATURES</b>   | Shape                     | Round                |
|                   | Volume brimful            | 250 ml $\pm 7$ ml    |
|                   | Volume under lid          | 200 ml $\pm 7$ ml    |
|                   | Height without lid        | 59.0 mm $\pm 0,5$ mm |
|                   | Max.burden on the cup     | 70 N                 |
|                   | Diameter                  | $\varnothing 95$     |
| <b>WEIGHT</b>     | Cup                       | 7.20 g $\pm 0,40$ g  |
| <b>DECORATION</b> | Cup                       | YES Dryoffset        |
|                   |                           | YES PVC sleeve       |
| <b>PACKING</b>    | Pallet: 1. dimension      | 1200x800             |
|                   | 2. weight                 | 169 kg               |
|                   | 3. height                 | 200 cm               |
|                   | Pcs/pallet:               | 18.720               |
|                   | Pcs/full truck (33 pall): | 617.760              |





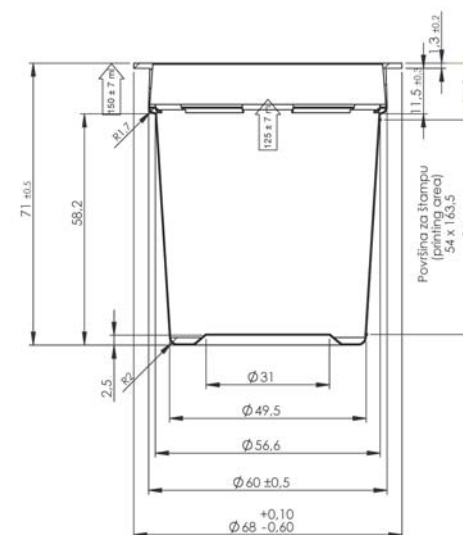
## Art. 252 PP; 252-1 PP

|                   |                           |                |              |
|-------------------|---------------------------|----------------|--------------|
| <b>FEATURES</b>   | Shape                     | Round          |              |
|                   | Volume brimful            | 150 ml         | $\pm 7$ ml   |
|                   | Volume under lid          | 120 ml         | $\pm 7$ ml   |
|                   | Height without lid        | 66.0 mm        | $\pm 0,5$ mm |
|                   | Max.burden on the cup     | 70 N           |              |
|                   | Diameter                  | $\text{Ø } 68$ |              |
| <b>WEIGHT</b>     | Cup 252                   | 5.50 g         | $\pm 0,30$ g |
|                   | Cup 252-1                 | 4.50 g         | $\pm 0,30$ g |
| <b>DECORATION</b> | Cup                       | YES            | Dryoffset    |
|                   |                           | YES            | PVC sleeve   |
| <b>PACKING</b>    | Pallet: 1. dimension      |                | 1200x800     |
|                   | 2. weight                 |                | 169 kg       |
|                   | 3. height                 |                | 200 cm       |
|                   | Pcs/pallet:               | Cup 252        | 24.570       |
|                   | Cup 252-1                 | 25.200         |              |
|                   | Pcs/full truck (33 pall): |                | 831.600      |

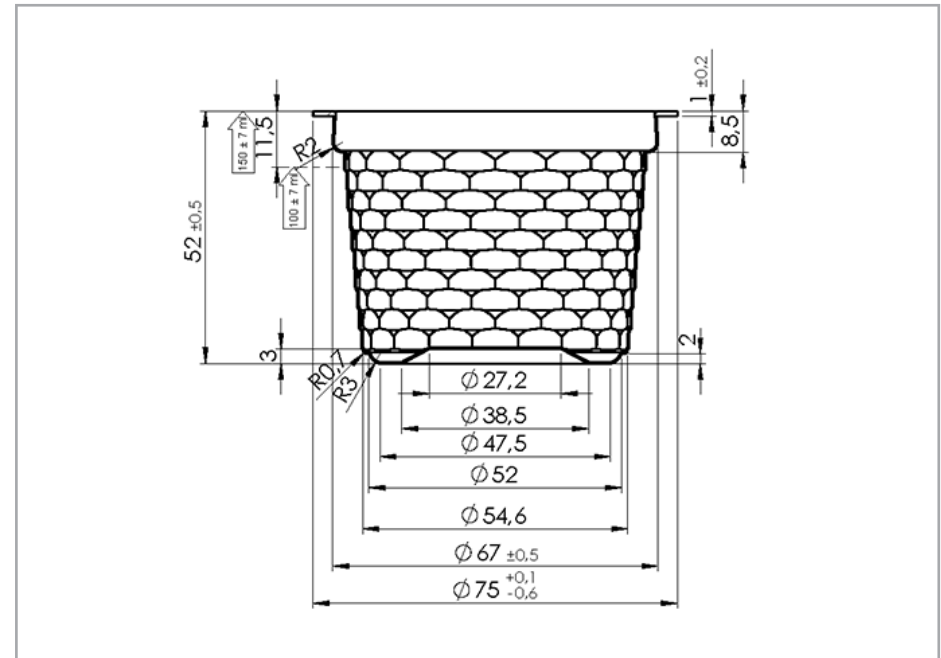
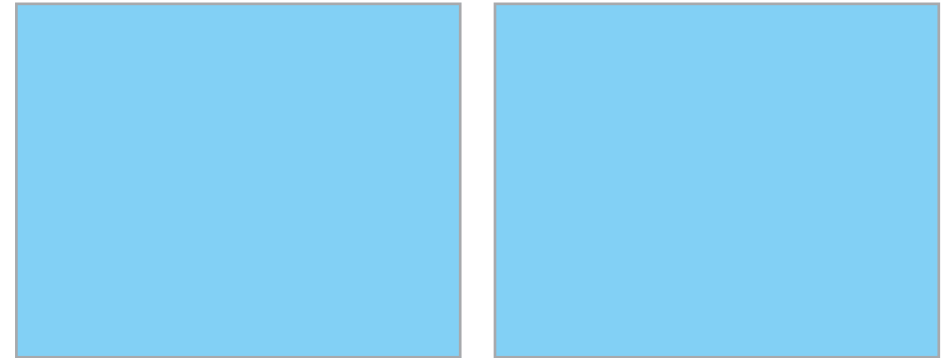


## Art. 255 PP; 255-1 PP

|                   |                           |                  |              |
|-------------------|---------------------------|------------------|--------------|
| <b>FEATURES</b>   | Shape                     | Round            |              |
|                   | Volume brimful            | 150 ml           | $\pm 7$ ml   |
|                   | Volume under lid          | 120 ml           | $\pm 7$ ml   |
|                   | Height without lid        | 71.0 mm          | $\pm 0,5$ mm |
|                   | Max.burden on the cup     | 70 N             |              |
|                   | Diameter                  | $\varnothing 68$ |              |
| <b>WEIGHT</b>     | Cup 255                   | 4.50 g           | $\pm 0,30$ g |
|                   | Cup 255-1                 | 5.50 g           | $\pm 0,30$ g |
| <b>DECORATION</b> | Cup                       | YES              | Dryoffset    |
|                   |                           | YES              | PVC sleeve   |
| <b>PACKING</b>    | Pallet: 1. dimension      |                  | 1200x800     |
|                   | 2. weight                 |                  | 190 kg       |
|                   | 3. height                 |                  | 200 cm       |
|                   | Pcs/pallet:               | Cup              | 28.350       |
|                   | Pcs/full truck (33 pall): |                  | 935.550      |



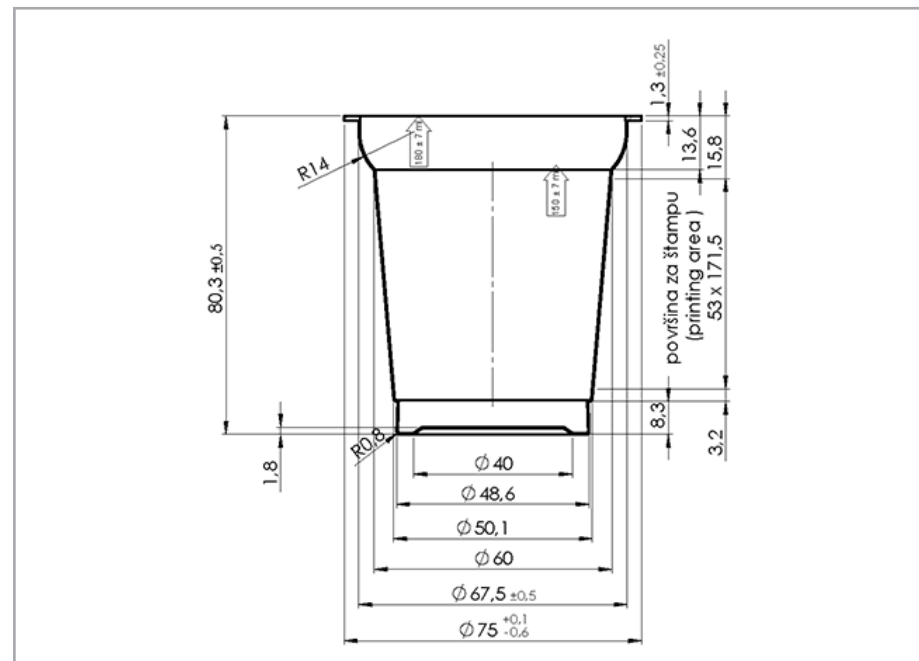
|                   |  |                               |
|-------------------|--|-------------------------------|
| <b>FEATURES</b>   | Shape  | Round                         |
|                   | Volume brimful                                 | 150 ml ± 7 ml                 |
|                   | Volume under lid                               | 100 ml ± 7 ml                 |
|                   | Height without lid                             | 10.9 mm ± 0,5 mm              |
|                   | Max.burden on the cup<br>Diameter              | 70 N<br>Ø 75                  |
| <b>WEIGHT</b>     | Cup  | 4.80 g ± 0,30 g               |
| <b>DECORATION</b> | Cup  | NO Dryoffset<br>NO PVC sleeve |
|                   |  |                               |
| <b>PACKING</b>    | Pallet: 1. dimension<br>2. weight<br>3. height | 1200x800<br>251 kg<br>200 cm  |
|                   | Pcs/pallet:                                    | 44.400                        |
|                   | Pcs/full truck (33 pall):                      | 1.465,200                     |



# Art. 257 PP



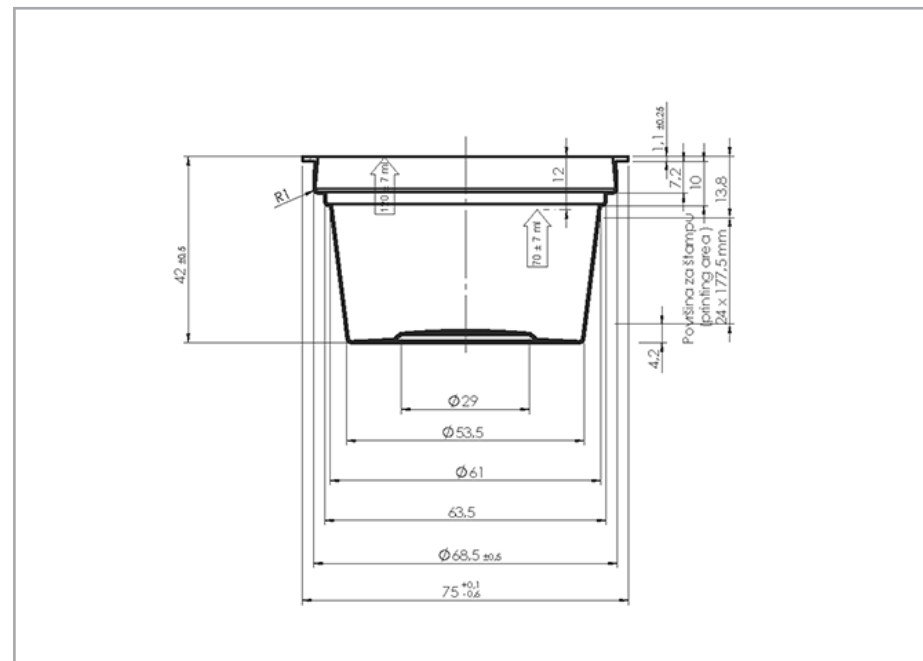
|                   |                           |                  |
|-------------------|---------------------------|------------------|
| <b>FEATURES</b>   | Shape                     | Round            |
|                   | Volume brimful            | 180 ml ± 7 ml    |
|                   | Volume under lid          | 150 ml ± 7 ml    |
|                   | Height without lid        | 80.3 mm ± 0,5 mm |
|                   | Max.burden on the cup     | 70 N             |
|                   | Diameter                  | Ø 75             |
| <b>WEIGHT</b>     | Cup                       | 6.00 g ± 0,40 g  |
| <b>DECORATION</b> | Cup                       | YES Dryoffset    |
|                   |                           | YES PVC sleeve   |
| <b>PACKING</b>    | Pallet: 1. dimension      | 1200x800         |
|                   | 2. weight                 | 202 kg           |
|                   | 3. height                 | 200 cm           |
|                   | Pcs/pallet:               | 27.450           |
|                   | Pcs/full truck (33 pall): | 905,850          |



# Art. 259 PP



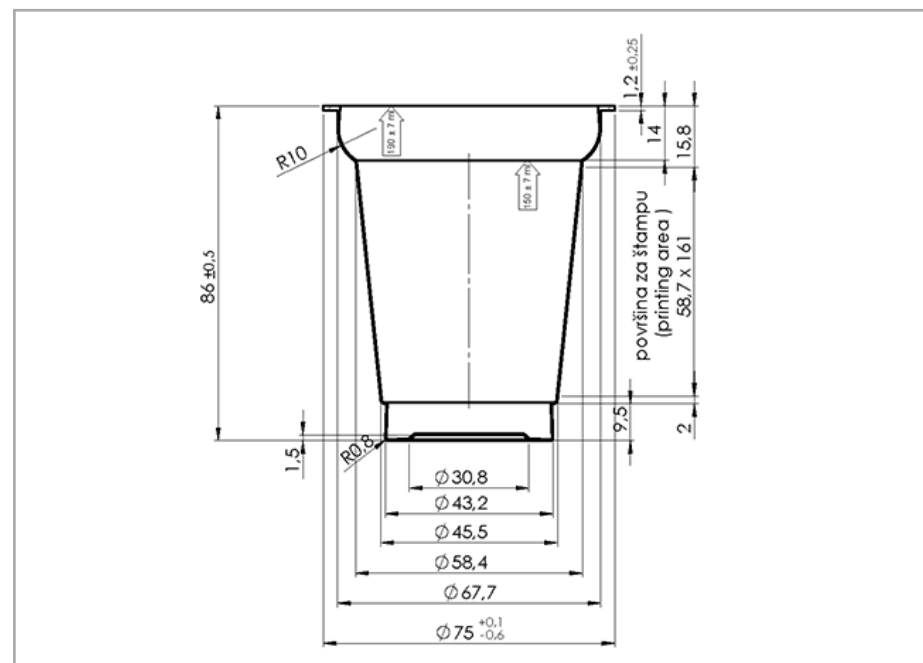
|                   |                           |                  |
|-------------------|---------------------------|------------------|
| <b>FEATURES</b>   | Shape                     | Round            |
|                   | Volume brimful            | 110 ml ± 7 ml    |
|                   | Volume under lid          | 70 ml ± 7 ml     |
|                   | Height without lid        | 42.0 mm ± 0,5 mm |
|                   | Max.burden on the cup     | 70 N             |
|                   | Diameter                  | Ø 75             |
| <b>WEIGHT</b>     | Cup                       | 5.20 g ± 0,30 g  |
| <b>DECORATION</b> | Cup                       | YES Dryoffset    |
|                   |                           | NO PVC sleeve    |
| <b>PACKING</b>    | Pallet: 1. dimension      | 1200x800         |
|                   | 2. weight                 | 202 kg           |
|                   | 3. height                 | 200 cm           |
|                   | Pcs/pallet:               | 31.500           |
|                   | Pcs/full truck (33 pall): | 1.039,500        |



# Art. 260 PP; 260-1 PP



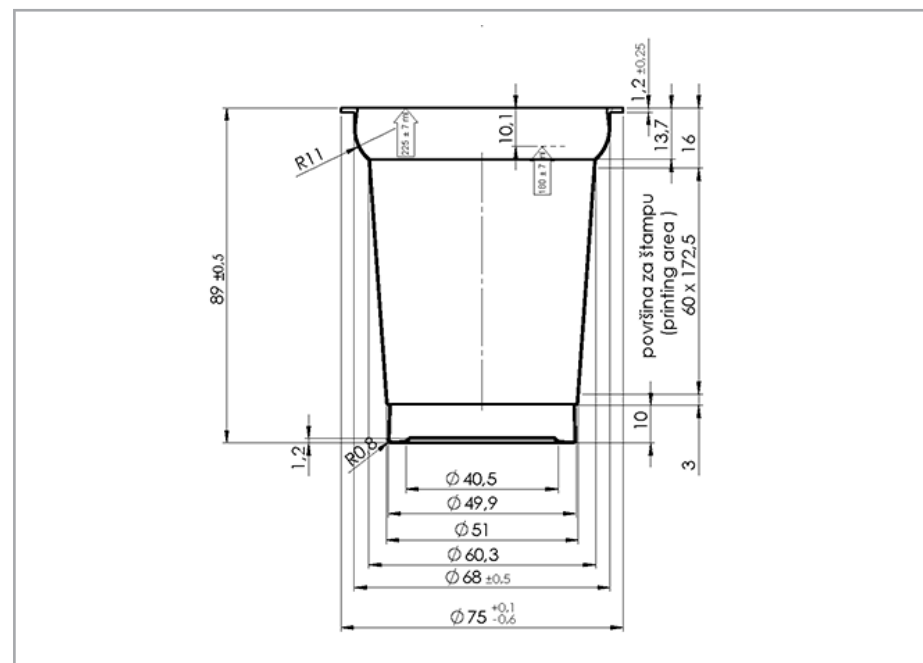
|                   |                           |         |            |
|-------------------|---------------------------|---------|------------|
| <b>FEATURES</b>   | Shape                     | Round   |            |
|                   | Volume brimful            | 190 ml  | ± 7 ml     |
|                   | Volume under lid          | 150 ml  | ± 7 ml     |
|                   | Height without lid        | 86.0 mm | ± 0,5 mm   |
|                   | Max.burden on the cup     | 70 N    |            |
|                   | Diameter                  | Ø 75    |            |
| <b>WEIGHT</b>     | Cup 260 PP                | 6.00 g  | ± 0,40 g   |
|                   | Cup 260-1 PP              | 6.50 g  | ± 0,40 g   |
| <b>DECORATION</b> | Cup                       | YES     | Dryoffset  |
|                   |                           | YES     | PVC sleeve |
| <b>PACKING</b>    | Pallet: 1. dimension      |         | 1200x800   |
|                   | 2. weight                 |         | 171 kg     |
|                   | 3. height                 |         | 200 cm     |
|                   | Pcs/pallet:               |         | 23.850     |
|                   | Pcs/full truck (33 pall): |         | 787,050    |



# Art. 261 PP; 261-1 PP



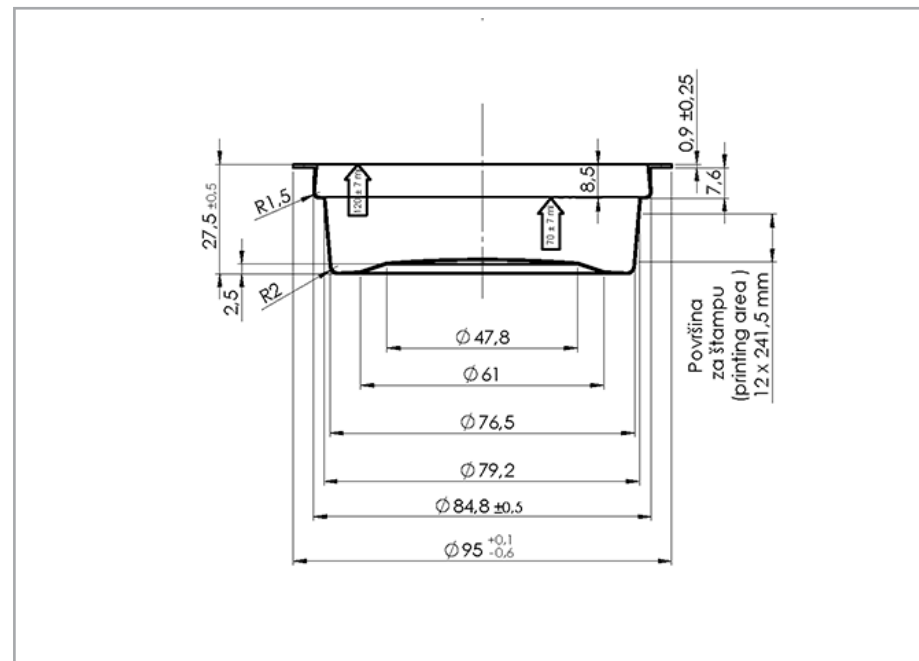
|                   |                           |                                 |
|-------------------|---------------------------|---------------------------------|
| <b>FEATURES</b>   | Shape                     | Round                           |
|                   | Volume brimful            | 225 ml ± 7 ml                   |
|                   | Volume under lid          | 180 ml ± 7 ml                   |
|                   | Height without lid        | 89.0 mm ± 0,5 mm                |
|                   | Max.burden on the cup     | 70 N                            |
|                   | Diameter                  | Ø 75                            |
| <b>WEIGHT</b>     | Cup 261PP                 | 6.70 g ± 0,40 g                 |
|                   | Cup 261-1PP               | 6.20 g ± 0,40 g                 |
| <b>DECORATION</b> | Cup                       | YES Dryoffset<br>YES PVC sleeve |
|                   |                           |                                 |
| <b>PACKING</b>    | Pallet: 1. dimension      | 1200x800                        |
|                   | 2. weight                 | 192 kg                          |
|                   | 3. height                 | 200 cm                          |
|                   | Pcs/pallet:               | 22.950                          |
|                   | Pcs/full truck (33 pall): | 757,350                         |



# Art. 262 PP



|                   |                           |                  |
|-------------------|---------------------------|------------------|
| <b>FEATURES</b>   | Shape                     | Round            |
|                   | Volume brimful            | 120 ml ± 7 ml    |
|                   | Volume under lid          | 70 ml ± 7 ml     |
|                   | Height without lid        | 27.5 mm ± 0,5 mm |
|                   | Max.burden on the cup     | 70 N             |
|                   | Diameter                  | Ø 95             |
| <b>WEIGHT</b>     | Cup                       | 6.00 g ± 0,40 g  |
| <b>DECORATION</b> | Cup                       | YES Dryoffset    |
|                   |                           | NO PVC sleeve    |
| <b>PACKING</b>    | Pallet: 1. dimension      | 1200x800         |
|                   | 2. weight                 | 162 kg           |
|                   | 3. height                 | 200 cm           |
|                   | Pcs/pallet:               | 20.736           |
|                   | Pcs/full truck (33 pall): | 684,288          |

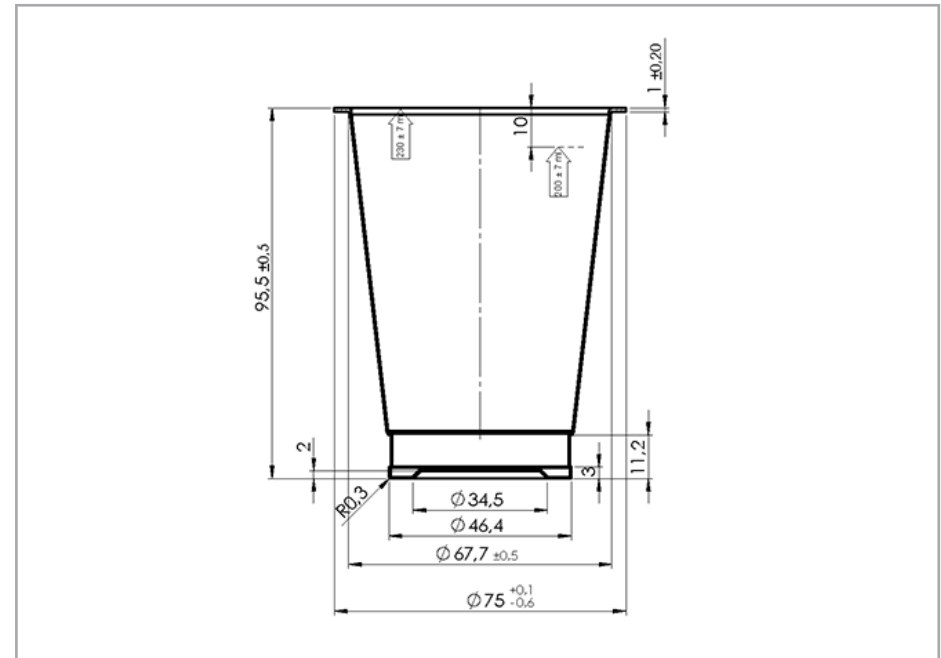




# Art. 272 PP



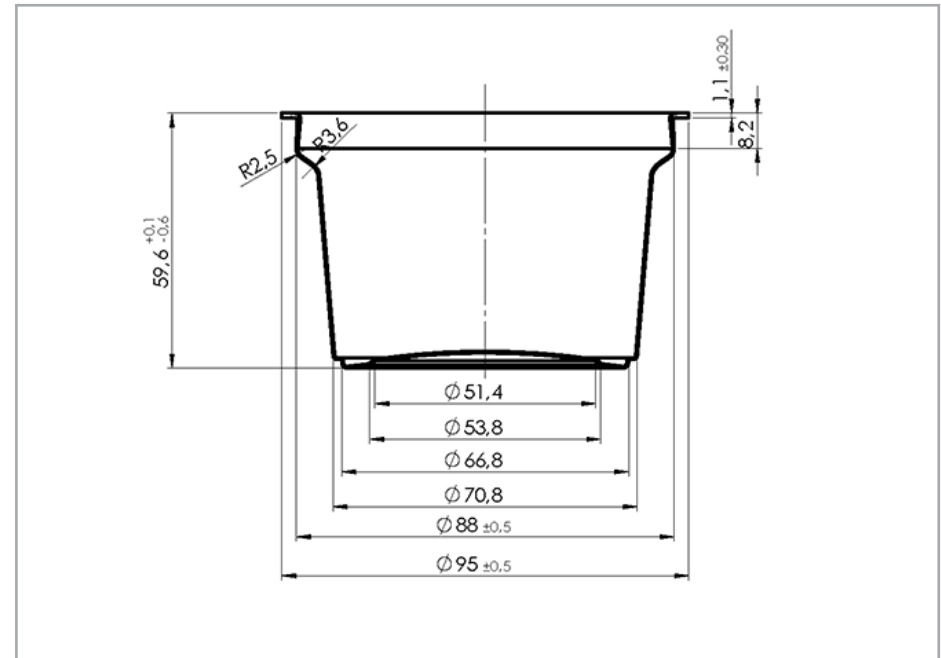
|                   |                           |          |              |
|-------------------|---------------------------|----------|--------------|
| <b>FEATURES</b>   | Shape                     | Round    |              |
|                   | Volume brimful            | 230 ml   | ± 7 ml       |
|                   | Volume under lid          | 200 ml   | ± 7 ml       |
|                   | Height without lid        | 95.5 mm  | ± 0,5 mm     |
|                   | Max.burden on the cup     | 70 N     |              |
|                   | Diameter                  | Ø 75     |              |
| <b>WEIGHT</b>     | Cup                       | 5.50 g   | ± 0,30 g     |
| <b>DECORATION</b> | Cup                       | NO       | Dryoffset    |
|                   |                           | YES      | Carton Label |
| <b>PACKING</b>    | Pallet: 1. dimension      | 1200x800 |              |
|                   | 2. weight                 | 142 kg   |              |
|                   | 3. height                 | 200 cm   |              |
|                   | Pcs/pallet:               | 18.900   |              |
|                   | Pcs/full truck (33 pall): | 623,700  |              |



# Art. 273 PP; 273-1 PP; 273-2 PP



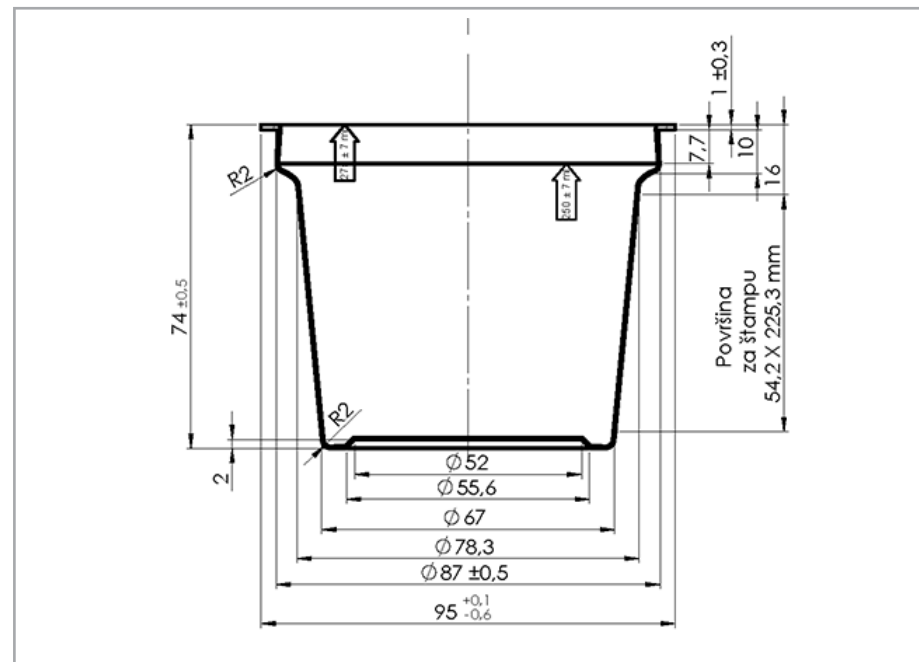
|                   |                           |                                 |
|-------------------|---------------------------|---------------------------------|
| <b>FEATURES</b>   | Shape                     | Round                           |
|                   | Volume brimful            | 250 ml ± 7 ml                   |
|                   | Volume under lid          | 200 ml ± 7 ml                   |
|                   | Height without lid        | 59.6 mm ± 0,5 mm                |
|                   | Max.burden on the cup     | 70 N                            |
|                   | Diameter                  | Ø 95                            |
| <b>WEIGHT</b>     | Cup 273 PP                | 9.30 g ± 0,40 g                 |
|                   | Cup 273-1 PP              | 7.20 g ± 0,40 g                 |
|                   | Cup 273-2 PP              | 10.20 g ± 0,40 g                |
| <b>DECORATION</b> | Cup                       | YES Dryoffset<br>YES PVC sleeve |
|                   |                           |                                 |
| <b>PACKING</b>    | Pallet: 1. dimension      | 1200x800                        |
|                   | 2. weight                 | 143 kg                          |
|                   | 3. height                 | 200 cm                          |
|                   | Pcs/pallet:               | 14.688                          |
|                   | Pcs/full truck (33 pall): | 484,704                         |



# Art. 274 PP; 274-1 PP



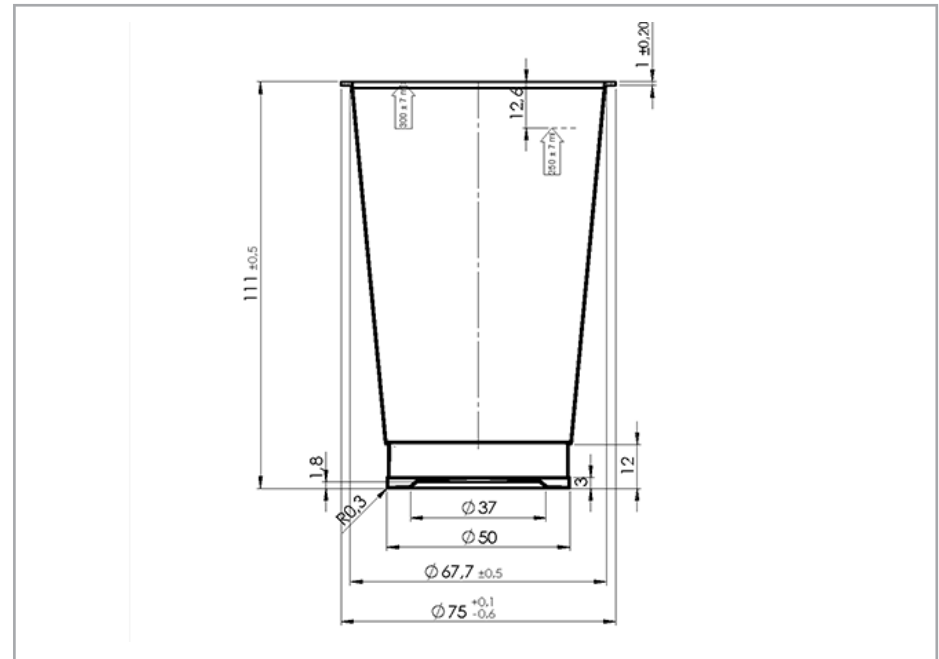
|                   |                           |                  |
|-------------------|---------------------------|------------------|
| <b>FEATURES</b>   | Shape                     | Round            |
|                   | Volume brimful            | 275 ml ± 7 ml    |
|                   | Volume under lid          | 250 ml ± 7 ml    |
|                   | Height without lid        | 74,0 mm ± 0,5 mm |
|                   | Max.burden on the cup     | 70 N             |
|                   | Diameter                  | Ø 95             |
| <b>WEIGHT</b>     | Cup 274 PP                | 11.50 g ± 0,50 g |
|                   | Cup 274-1 PP              | 9.00 g ± 0,40 g  |
| <b>DECORATION</b> | Cup                       | YES Dryoffset    |
|                   |                           | YES PVC sleeve   |
| <b>PACKING</b>    | Pallet: 1. dimension      | 1200x800         |
|                   | 2. weight                 | 200 kg           |
|                   | 3. height                 | 200 cm           |
|                   | Pcs/pallet:               | 14.112           |
|                   | Pcs/full truck (33 pall): | 465,696          |



# Art. 281 PP



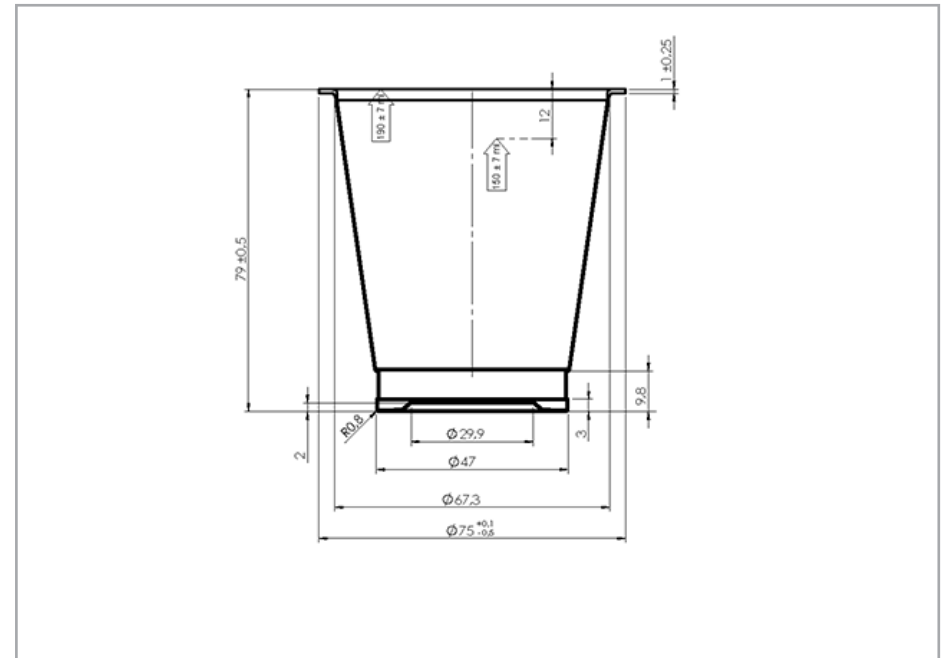
|                   |                           |                   |
|-------------------|---------------------------|-------------------|
| <b>FEATURES</b>   | Shape                     | Round             |
|                   | Volume brimful            | 300 ml ± 7 ml     |
|                   | Volume under lid          | 250 ml ± 7 ml     |
|                   | Height without lid        | 111.0 mm ± 0,5 mm |
|                   | Max.burden on the cup     | 70 N              |
|                   | Diameter                  | Ø 75              |
| <b>WEIGHT</b>     | Cup                       | 6.50 g ± 0,30 g   |
| <b>DECORATION</b> | Cup                       | NO Dryoffset      |
|                   |                           | YES Carton Label  |
| <b>PACKING</b>    | Pallet: 1. dimension      | 1200x800          |
|                   | 2. weight                 | 155 kg            |
|                   | 3. height                 | 200 cm            |
|                   | Pcs/pallet:               | 18.000            |
|                   | Pcs/full truck (33 pall): | 594,000           |



# Art. 282 PP



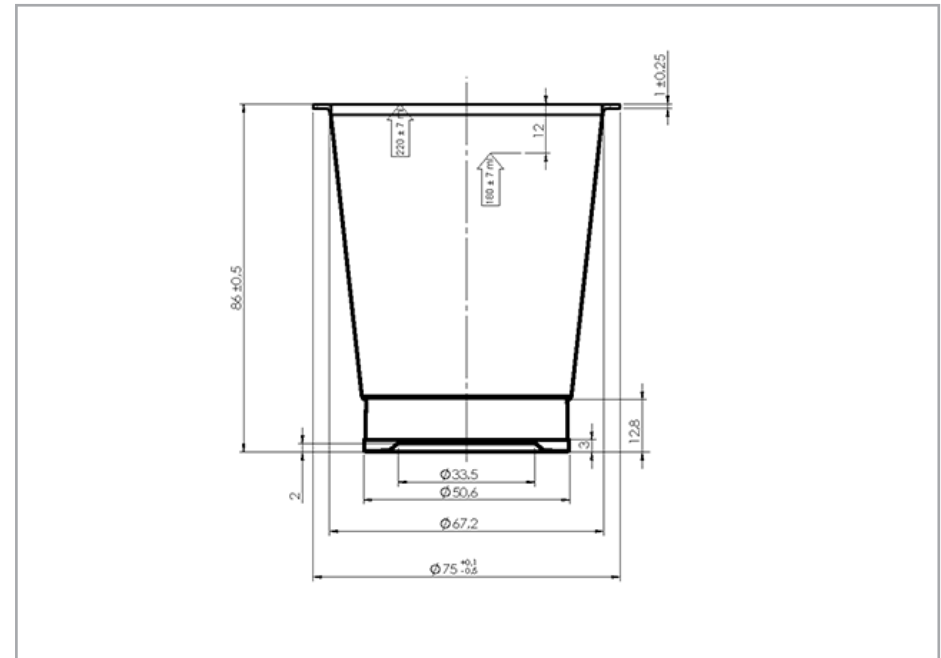
|                   |                           |         |              |
|-------------------|---------------------------|---------|--------------|
| <b>FEATURES</b>   | Shape                     | Round   |              |
|                   | Volume brimful            | 190 ml  | ± 7 ml       |
|                   | Volume under lid          | 150 ml  | ± 7 ml       |
|                   | Height without lid        | 79.0 mm | ± 0,5 mm     |
|                   | Max.burden on the cup     | 70 N    |              |
|                   | Diameter                  | Ø 75    |              |
| <b>WEIGHT</b>     | Cup                       | 4.30 g  | ± 0,30 g     |
| <b>DECORATION</b> | Cup                       | NO      | Dryoffset    |
|                   |                           | YES     | Carton Label |
| <b>PACKING</b>    | Pallet: 1. dimension      |         | 1200x800     |
|                   | 2. weight                 |         | 131 kg       |
|                   | 3. height                 |         | 200 cm       |
|                   | Pcs/pallet:               |         | 21.600       |
|                   | Pcs/full truck (33 pall): |         | 712,800      |



# Art. 283 PP



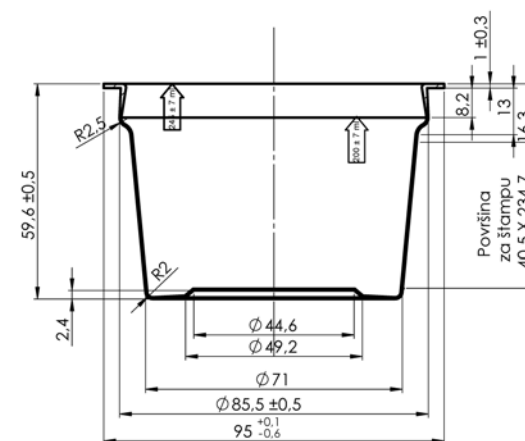
|                   |                           |         |              |
|-------------------|---------------------------|---------|--------------|
| <b>FEATURES</b>   | Shape                     | Round   |              |
|                   | Volume brimful            | 220 ml  | ± 7 ml       |
|                   | Volume under lid          | 180 ml  | ± 7 ml       |
|                   | Height without lid        | 86.0 mm | ± 0,5 mm     |
|                   | Max.burden on the cup     | 70 N    |              |
|                   | Diameter                  | Ø 75    |              |
| <b>WEIGHT</b>     | Cup                       | 4.70 g  | ± 0,30 g     |
| <b>DECORATION</b> | Cup                       | NO      | Dryoffset    |
|                   |                           | YES     | Carton Label |
| <b>PACKING</b>    | Pallet: 1. dimension      |         | 1200x800     |
|                   | 2. weight                 |         | 122 kg       |
|                   | 3. height                 |         | 200 cm       |
|                   | Pcs/pallet:               |         | 18.000       |
|                   | Pcs/full truck (33 pall): |         | 594,000      |



# Art. 284 PP



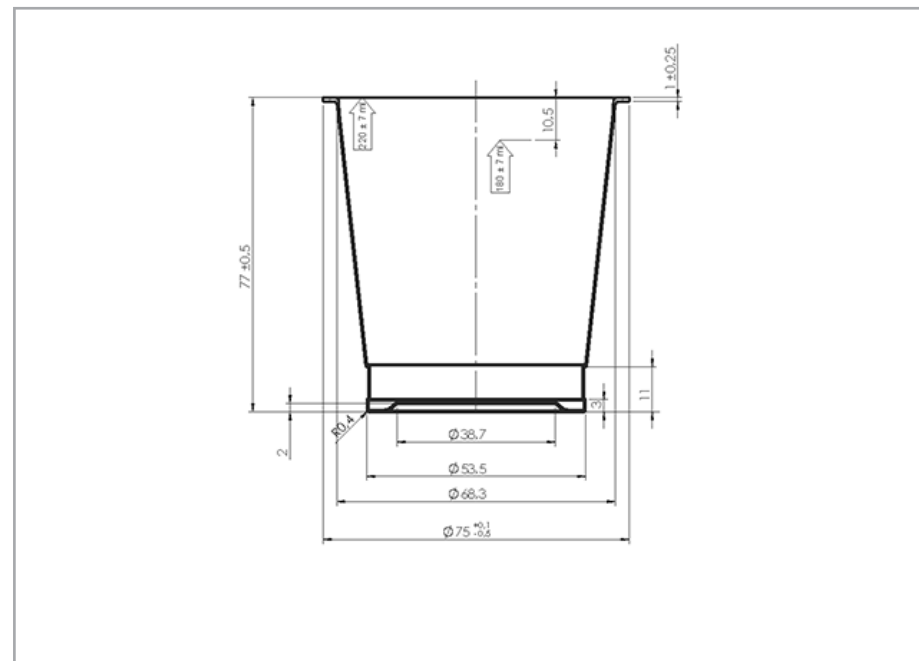
|                   |                           |                   |
|-------------------|---------------------------|-------------------|
| <b>FEATURES</b>   | Shape                     | Round             |
|                   | Volume brimful            | 245 ml ± 7 ml     |
|                   | Volume under lid          | 200 ml ± 7 ml     |
|                   | Height without lid        | 59.6 mm ± 0,5 mm  |
|                   | Max.burden on the cup     | 70 N              |
|                   | Diameter                  | Ø 95 x 59.6       |
| <b>WEIGHT</b>     | Cup                       | 7.20 g ± 0,40 g   |
| <b>DECORATION</b> | Cup                       | YES Dryoffset     |
|                   |                           | YES Shrink Sleeve |
| <b>PACKING</b>    | Pallet: 1. dimension      | 1200x800          |
|                   | 2. weight                 | 141 kg            |
|                   | 3. height                 | 200 cm            |
|                   | Pcs/pallet:               | 14.400            |
|                   | Pcs/full truck (33 pall): | 475,200           |



# Art. 286 PP



|                   |                           |          |              |
|-------------------|---------------------------|----------|--------------|
| <b>FEATURES</b>   | Shape                     | Round    |              |
|                   | Volume brimful            | 220 ml   | ± 7 ml       |
|                   | Volume under lid          | 180 ml   | ± 7 ml       |
|                   | Height without lid        | 77.0 mm  | ± 0,5 mm     |
|                   | Max.burden on the cup     | 70 N     |              |
|                   | Diameter                  | Ø 75     |              |
| <b>WEIGHT</b>     | Cup                       | 5.00 g   | ± 0,30 g     |
| <b>DECORATION</b> | Cup                       | NO       | Dryoffset    |
|                   |                           | YES      | Carton Label |
| <b>PACKING</b>    | Pallet: 1. dimension      | 1200x800 |              |
|                   | 2. weight                 | 197 kg   |              |
|                   | 3. height                 | 200 cm   |              |
|                   | Pcs/pallet:               | 18.900   |              |
|                   | Pcs/full truck (33 pall): | 623,700  |              |

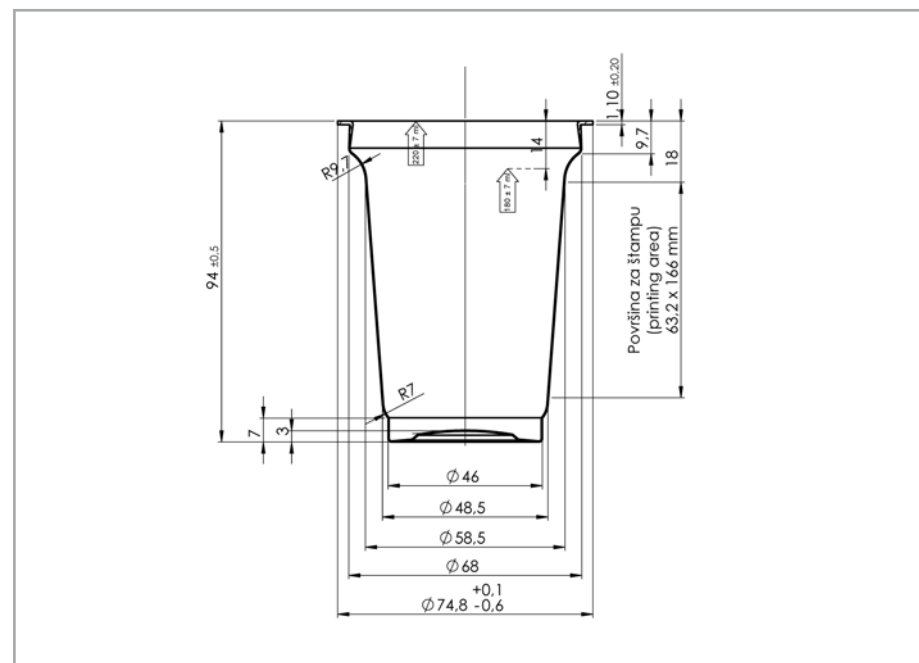




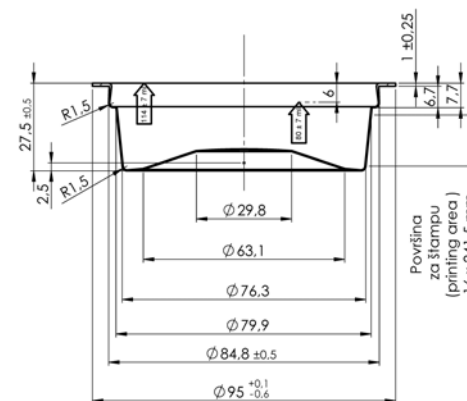
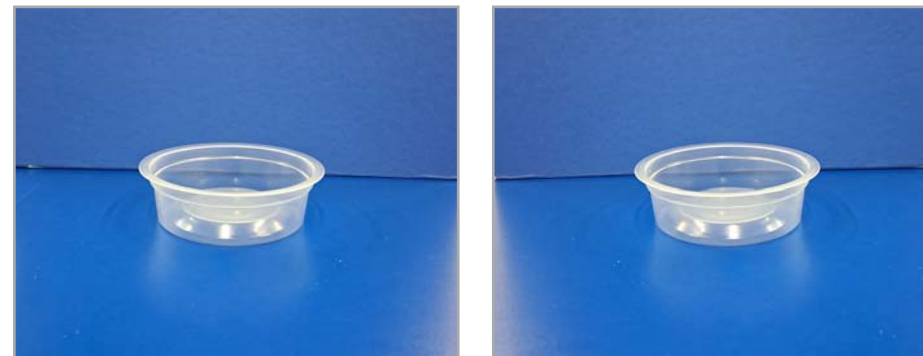
# Art. 289 PP



|                   |                           |                   |
|-------------------|---------------------------|-------------------|
| <b>FEATURES</b>   | Shape                     | Round             |
|                   | Volume brimful            | 220 ml ± 7 ml     |
|                   | Volume under lid          | 180 ml ± 7 ml     |
|                   | Height without lid        | 94,0 mm ± 0,5 mm  |
|                   | Max.burden on the cup     | 70 N              |
|                   | Diameter                  | Ø 75x 94          |
| <b>WEIGHT</b>     | Cup                       | 5.80 g ± 0,30 g   |
| <b>DECORATION</b> | Cup                       | YES Dryoffset     |
|                   |                           | YES Shrink sleeve |
| <b>PACKING</b>    | Pallet: 1. dimension      | 1200x800          |
|                   | 2. weight                 | 162 kg            |
|                   | 3. height                 | 200 cm            |
|                   | Pcs/pallet:               | 23.850            |
|                   | Pcs/full truck (33 pall): | 787,050           |



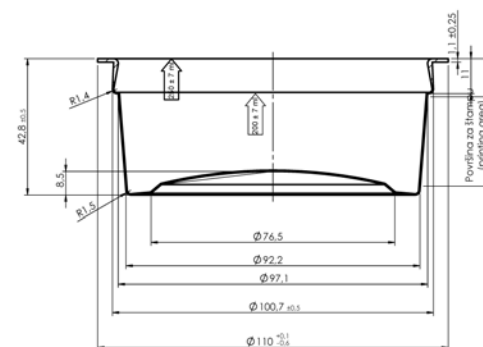
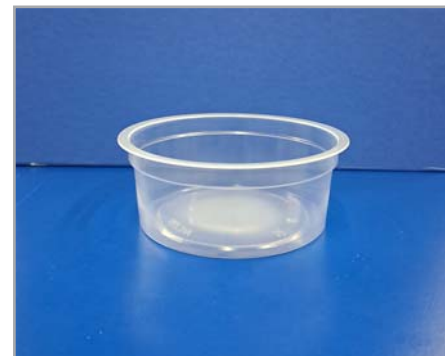
|                   |                           |                   |
|-------------------|---------------------------|-------------------|
| <b>FEATURES</b>   | Shape                     | Round             |
|                   | Volume brimful            | 114 ml ± 7 ml     |
|                   | Volume under lid          | 100 ml ± 7 ml     |
|                   | Height without lid        | 27.5 mm ± 0,5 mm  |
|                   | Max.burden on the cup     | 70 N              |
|                   | Diameter                  | Ø 95 x 27.5       |
| <b>WEIGHT</b>     | Cup                       | 6.40 g ± 0,40 g   |
| <b>DECORATION</b> | Cup                       | YES Dryoffset     |
|                   |                           | YES Shrink sleeve |
| <b>PACKING</b>    | Pallet: 1. dimension      | 1200x800          |
|                   | 2. weight                 | 122 kg            |
|                   | 3. height                 | 200 cm            |
|                   | Pcs/pallet:               | 22.464            |
|                   | Pcs/full truck (33 pall): | 741,312           |



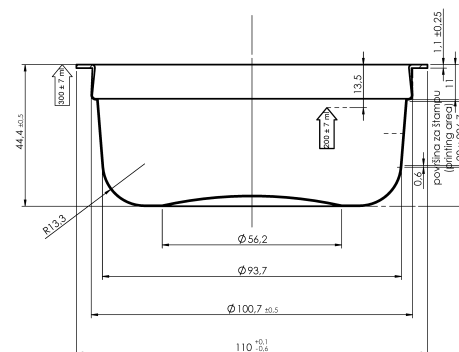
# Art. 291 PP



|                   |                           |                                    |
|-------------------|---------------------------|------------------------------------|
| <b>FEATURES</b>   | Shape                     | Round                              |
|                   | Volume brimful            | 250 ml ± 7 ml                      |
|                   | Volume under lid          | 200 ml ± 7 ml                      |
|                   | Height without lid        | 42.8 mm ± 0,5 mm                   |
|                   | Max.burden on the cup     | 70 N                               |
|                   | Diameter                  | Ø 110 x 42.8                       |
| <b>WEIGHT</b>     | Cup                       | 9.70 g ± 0,40 g                    |
| <b>DECORATION</b> | Cup                       | YES Dryoffset<br>YES Shrink sleeve |
|                   |                           |                                    |
| <b>PACKING</b>    | Pallet: 1. dimension      | 1200x800                           |
|                   | 2. weight                 | 118 kg                             |
|                   | 3. height                 | 200 cm                             |
|                   | Pcs/pallet:               | 8.262                              |
|                   | Pcs/full truck (33 pall): | 272,646                            |



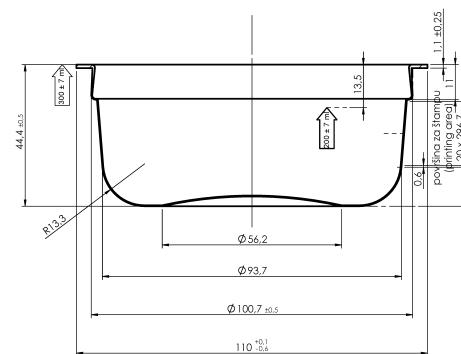
|                   |                           |                   |
|-------------------|---------------------------|-------------------|
| <b>FEATURES</b>   | Shape                     | Round             |
|                   | Volume brimful            | 300 ml ± 7 ml     |
|                   | Volume under lid          | 200 ml ± 7 ml     |
|                   | Height without lid        | 44.4 mm ± 0,5 mm  |
|                   | Max.burden on the cup     | 70 N              |
|                   | Diameter                  | Ø 110 x 44.4      |
| <b>WEIGHT</b>     | Cup                       | 9.70 g ± 0,40 g   |
| <b>DECORATION</b> | Cup                       | YES Dryoffset     |
|                   |                           | YES Shrink sleeve |
| <b>PACKING</b>    | Pallet: 1. dimension      | 1200x800          |
|                   | 2. weight                 | 143 kg            |
|                   | 3. height                 | 200 cm            |
|                   | Pcs/pallet:               | 11.448            |
|                   | Pcs/full truck (33 pall): | 377,784           |



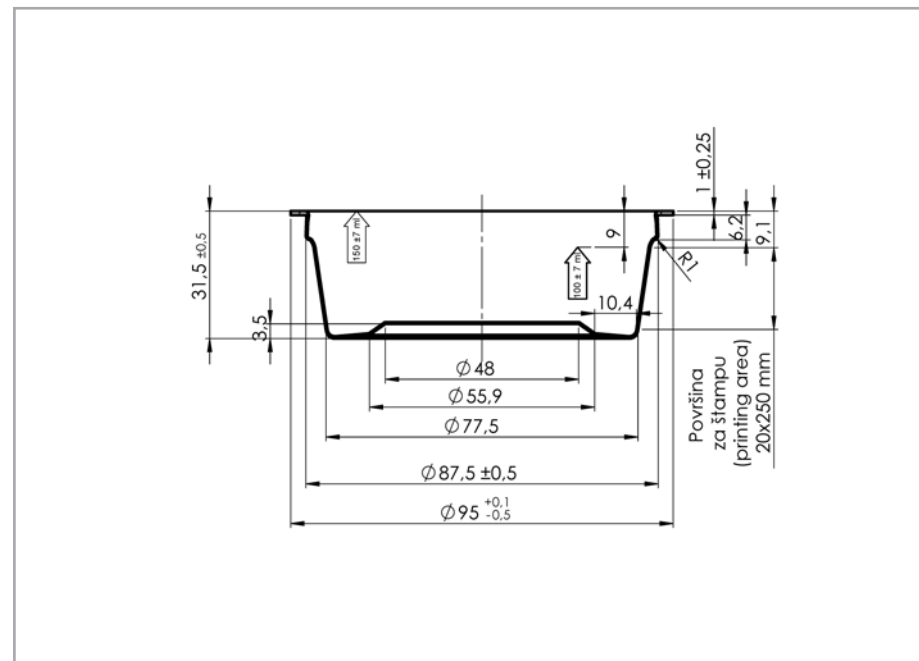
# Art. 229-4 PP crna



|                   |                           |                   |
|-------------------|---------------------------|-------------------|
| <b>FEATURES</b>   | Shape                     | Round             |
|                   | Volume brimful            | 300 ml ± 7 ml     |
|                   | Volume under lid          | 200 ml ± 7 ml     |
|                   | Height without lid        | 44.4 mm ± 0,5 mm  |
|                   | Max.burden on the cup     | 70 N              |
|                   | Diameter                  | Ø 110 x 44.4      |
| <b>WEIGHT</b>     | Cup                       | 9.70 g ± 0,40 g   |
| <b>DECORATION</b> | Cup                       | YES Dryoffset     |
|                   |                           | YES Shrink sleeve |
| <b>PACKING</b>    | Pallet: 1. dimension      | 1200x800          |
|                   | 2. weight                 | 143 kg            |
|                   | 3. height                 | 200 cm            |
|                   | Pcs/pallet:               | 11.448            |
|                   | Pcs/full truck (33 pall): | 377,784           |



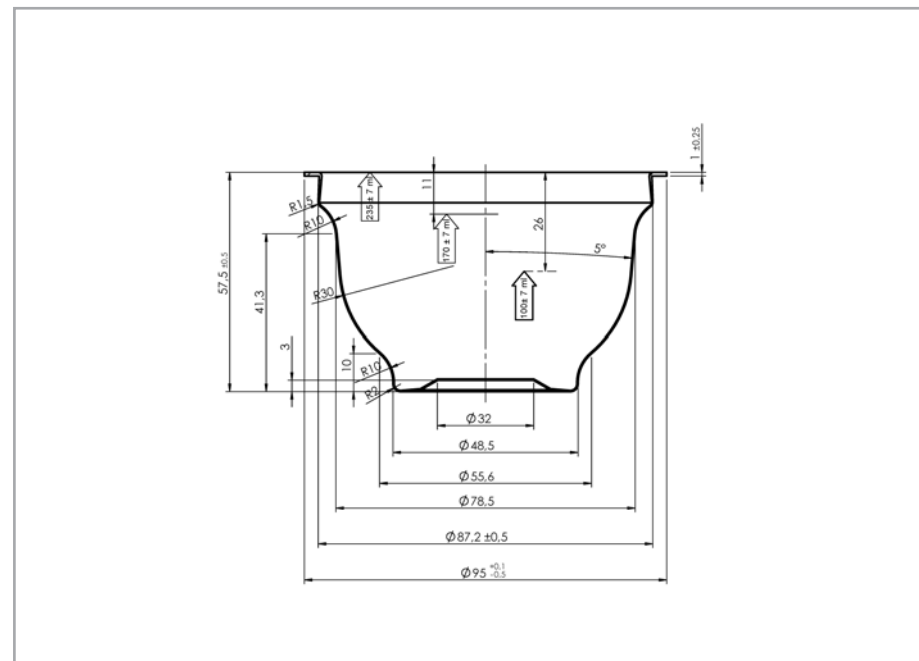
|                   |                           |                   |
|-------------------|---------------------------|-------------------|
| <b>FEATURES</b>   | Shape                     | Round             |
|                   | Volume brimful            | 150 ml ± 7 ml     |
|                   | Volume under lid          | 100 ml ± 7 ml     |
|                   | Height without lid        | 31.50 mm ± 0,5 mm |
|                   | Max.burden on the cup     | 70 N              |
|                   | Diameter                  | Ø 95x 31.5        |
| <b>WEIGHT</b>     | Cup+Shrink Sleeve         | 7.30 g ± 0,40 g   |
| <b>DECORATION</b> | Cup                       | YES Dryoffset     |
|                   |                           | YES Shrink sleeve |
| <b>PACKING</b>    | Pallet: 1. dimension      | 1200x800          |
|                   | 2. weight                 | 000 kg            |
|                   | 3. height                 | 000 cm            |
|                   | Pcs/pallet:               | 00.000            |
|                   | Pcs/full truck (33 pall): | 000,000           |



# Art. 299 PP



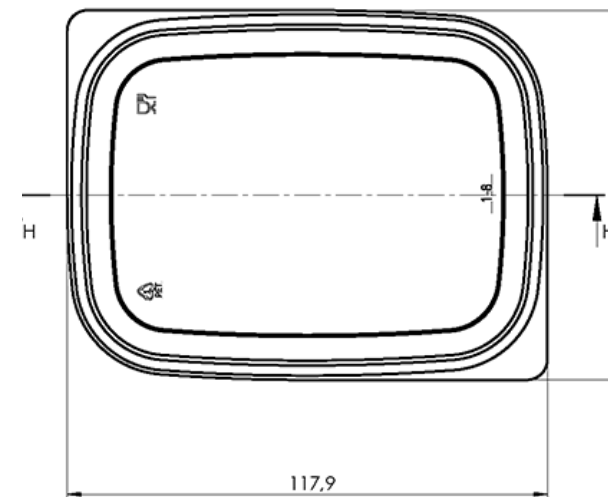
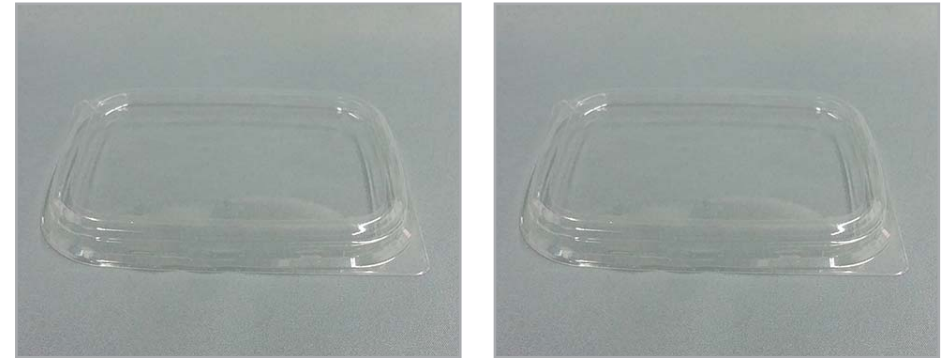
|                   |                           |             |               |
|-------------------|---------------------------|-------------|---------------|
| <b>FEATURES</b>   | Shape                     | Round       |               |
|                   | Volume brimful            | 235 ml      | ± 7 ml        |
|                   | Volume under lid          | 170 ml      | ± 7 ml        |
|                   | Height without lid        | 57.5 mm     | ± 0,5 mm      |
|                   | Max.burden on the cup     | 70 N        |               |
|                   | Diameter                  | Ø 95 x 57.5 |               |
| <b>WEIGHT</b>     | Cup+Shrink sleeve         | 7.30 g      | ± 0,40 g      |
| <b>DECORATION</b> | Cup                       | NO          | Dryoffset     |
|                   |                           | YES         | Shrink sleeve |
| <b>PACKING</b>    | Pallet: 1. dimension      | 1200x800    |               |
|                   | 2. weight                 | 160 kg      |               |
|                   | 3. height                 | 200 cm      |               |
|                   | Pcs/pallet:               | 19.008      |               |
|                   | Pcs/full truck (33 pall): | 627,264     |               |



## Art. 300-1 PET rectangular overlid



|                   |                           |            |              |
|-------------------|---------------------------|------------|--------------|
| <b>FEATURES</b>   | Shape                     | Rectanular |              |
|                   | Volume brimful            | 0ml        | $\pm 7$ ml   |
|                   | Volume under lid          | 0 ml       | $\pm 7$ ml   |
|                   | Height of the lid         | 10.9 mm    | $\pm 0,5$ mm |
|                   | Max.burden on the cup     | 70 N       |              |
|                   | Dimension                 | 110 x 83   |              |
| <b>WEIGHT</b>     | Lid                       | 3.40 g     | $\pm 0,30$ g |
| <b>DECORATION</b> | Lid                       | NO         | Dryoffset    |
|                   |                           | NO         | PVC sleeve   |
| <b>PACKING</b>    | Pallet: 1. dimension      | 1200x800   |              |
|                   | 2. weight                 | 152 kg     |              |
|                   | 3. height                 | 200 cm     |              |
|                   | Pcs/pallet:               | 34.560     |              |
|                   | Pcs/full truck (33 pall): | 1.140,480  |              |

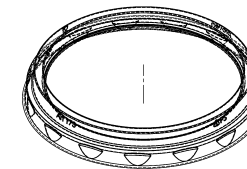
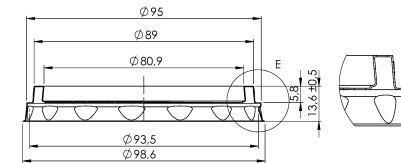
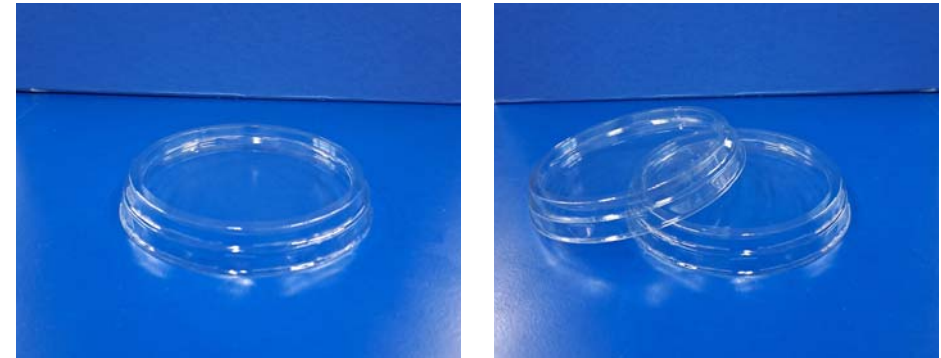




# Art. 303 PET



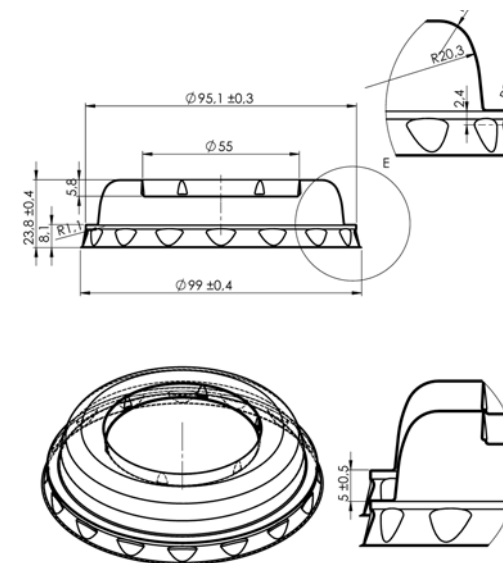
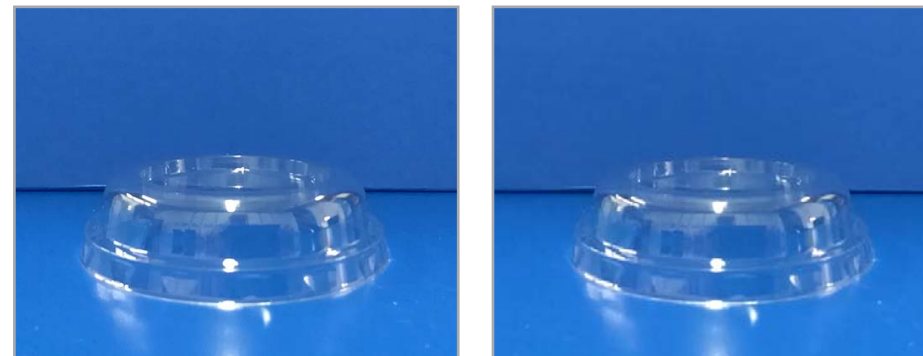
|                   |                           |         |            |
|-------------------|---------------------------|---------|------------|
| <b>FEATURES</b>   | Shape                     | Round   |            |
|                   | Volume brimful            | 0.0 ml  | ± 7 ml     |
|                   | Volume under lid          | 0.0 ml  | ± 7 ml     |
|                   | Height without lid        | 23.8 mm | ± 0,5 mm   |
|                   | Max.burden on the cup     | 70 N    |            |
|                   | Diameter                  | Ø 95    |            |
| <b>WEIGHT</b>     | LID                       | 5.00 g  | ± 0,30 g   |
| <b>DECORATION</b> | LID                       | NO      | Dryoffset  |
|                   |                           | YES     | Sticker PP |
| <b>PACKING</b>    | Pallet: 1. dimension      |         | 1200x800   |
|                   | 2. weight                 |         | 200 kg     |
|                   | 3. height                 |         | 180 cm     |
|                   | Pcs/pallet:               |         | 31.280     |
|                   | Pcs/full truck (33 pall): |         | 1.032.240  |



# Art. 304 PET



|                   |  |                                |
|-------------------|--|--------------------------------|
| <b>FEATURES</b>   | Shape  | Round                          |
|                   | Volume brimful                                 | 0.0 ml ± 7 ml                  |
|                   | Volume under lid                               | 0.0 ml ± 7 ml                  |
|                   | Height without lid                             | 23.8 mm ± 0,5 mm               |
|                   | Max.burden on the cup                          | 70 N                           |
|                   | Diameter                                       | Ø 95                           |
| <b>WEIGHT</b>     | LID  | 5.00 g ± 0,30 g                |
| <b>DECORATION</b> | LID  | NO Dryoffset<br>YES Sticker PP |
| <b>PACKING</b>    | Pallet: 1. dimension<br>2. weight<br>3. height | 1200x800<br>200 kg<br>180 cm   |
|                   | Pcs/pallet:                                    | 31.280                         |
|                   | Pcs/full truck (33 pall):                      | 1.032.240                      |

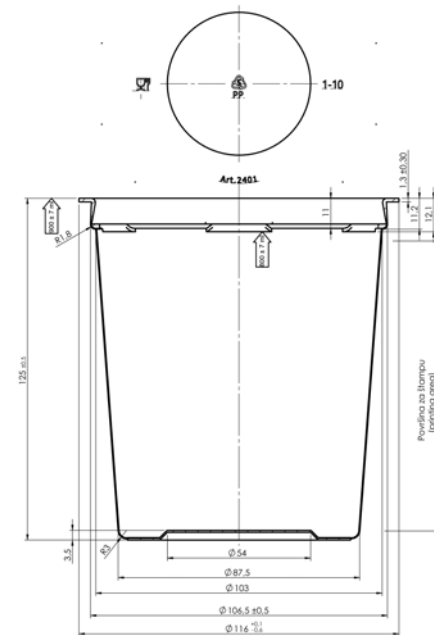




# Art. 2401 PP



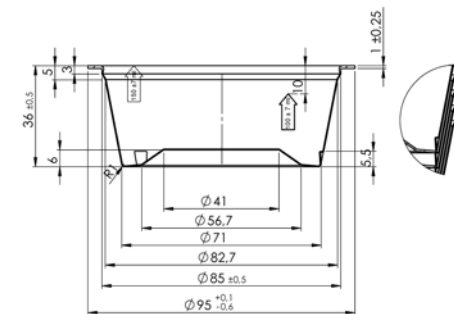
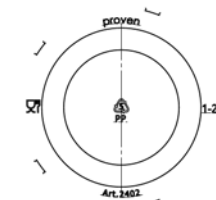
|                   |                           |                 |
|-------------------|---------------------------|-----------------|
| <b>FEATURES</b>   | Shape                     | Round           |
|                   | Volume brimful            | 900 ml ± 7 ml   |
|                   | Volume under lid          | 800 ml ± 7 ml   |
|                   | Height of the cup         | 130 mm ± 0,5 mm |
|                   | Max.burden on the cup     | 70 N            |
|                   | Dimension                 | Ø116 x 125      |
| <b>WEIGHT</b>     | Cup                       | 16,5 g ± 0,50 g |
| <b>DECORATION</b> | Cup                       | YES Dryoffset   |
|                   |                           | NO PVC sleeve   |
| <b>PACKING</b>    | Pallet: 1. dimension      | 1200x800        |
|                   | 2. weight                 | 166 kg          |
|                   | 3. height                 | 200 cm          |
|                   | Pcs/pallet:               | 8856            |
|                   | Pcs/full truck (33 pall): | 292.248         |



## Art. 2402 PP - under development



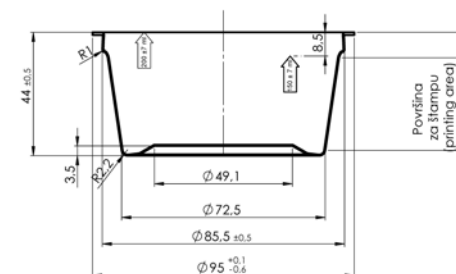
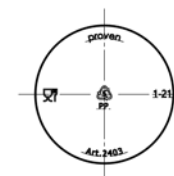
|                   |  |           |                            |
|-------------------|--|-----------|----------------------------|
| <b>FEATURES</b>   | Shape  | Round     |                            |
|                   | Volume brimful                                 | 150 ml    | ± 7 ml                     |
|                   | Volume under lid                               | 100 ml    | ± 7 ml                     |
|                   | Height of the cup                              | 36 mm     | ± 0,5 mm                   |
|                   | Max.burden on the cup                          | 70 N      |                            |
|                   | Dimension                                      | Ø 95 x 36 |                            |
| <b>WEIGHT</b>     | Cup  | 7,0 g     | ± 0,40 g                   |
| <b>DECORATION</b> | Cup  | YES       | Dryoffset                  |
|                   |  | YES       | PVC sleeve                 |
| <b>PACKING</b>    | Pallet: 1. dimension<br>2. weight<br>3. height |           | 1200x800<br>- kg<br>200 cm |
|                   | Pcs/pallet:                                    |           | NO DATA                    |
|                   | Pcs/full truck (33 pall):                      |           | NO DATA                    |



# Art. 2403 PP



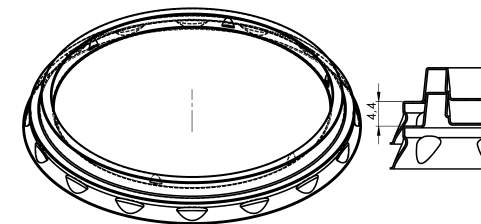
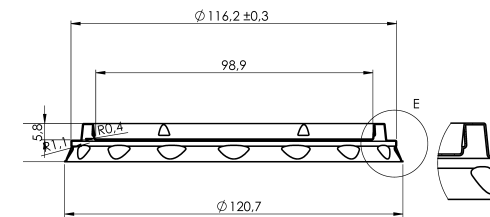
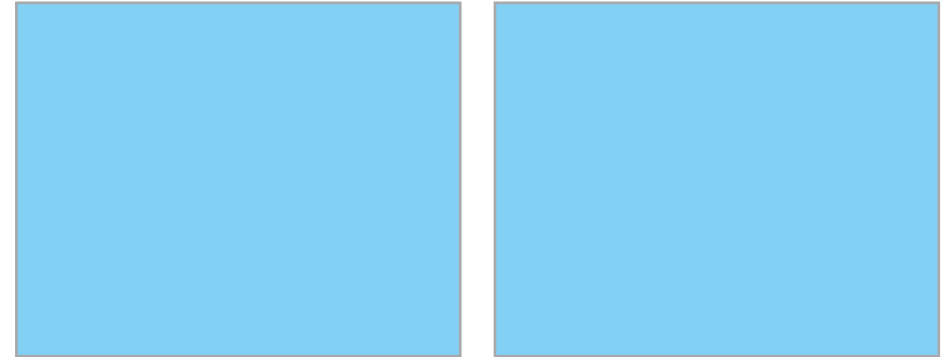
|                   |                           |           |            |
|-------------------|---------------------------|-----------|------------|
| <b>FEATURES</b>   | Shape                     | Round     |            |
|                   | Volume brimful            | 200 ml    | ± 7 ml     |
|                   | Volume under lid          | 150 ml    | ± 7 ml     |
|                   | Height of the cup         | 44 mm     | ± 0,5 mm   |
|                   | Max.burden on the cup     | 70 N      |            |
|                   | Dimension                 | Ø 95 x 44 |            |
| <b>WEIGHT</b>     | Cup                       | 6,5 g     | ± 0,40 g   |
| <b>DECORATION</b> | Cup                       | YES       | Dryoffset  |
|                   |                           | YES       | PVC sleeve |
| <b>PACKING</b>    | Pallet: 1. dimension      |           | 1200x800   |
|                   | 2. weight                 |           | 165 kg     |
|                   | 3. height                 |           | 200 cm     |
|                   | Pcs/pallet:               |           | 22.464     |
|                   | Pcs/full truck (33 pall): |           | 741.312    |



# Art. 2405 PP - OVERLID $\Phi$ -116



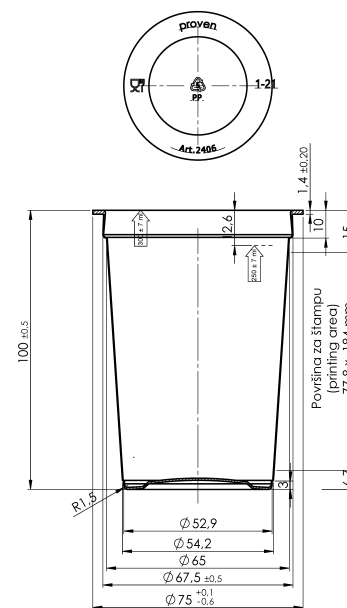
|                   |                           |                     |
|-------------------|---------------------------|---------------------|
| <b>FEATURES</b>   | Shape                     | Round               |
|                   | Volume brimful            | 900 ml $\pm$ 7 ml   |
|                   | Volume under lid          | 800 ml $\pm$ 7 ml   |
|                   | Height of the lid         | 130 mm $\pm$ 0,5 mm |
|                   | Max.burden on the lid     | 70 N                |
|                   | Dimension                 | $\Phi$ 116 x 13,6   |
| <b>WEIGHT</b>     | LID                       | 4,5 g $\pm$ 0,30 g  |
| <b>DECORATION</b> | LID                       | YES Dryoffset       |
|                   |                           | YES Labeling        |
| <b>PACKING</b>    | Pallet: 1. dimension      | 1200x800            |
|                   | 2. weight                 | 147 kg              |
|                   | 3. height                 | 200 cm              |
|                   | Pcs/pallet:               | 22.400              |
|                   | Pcs/full truck (33 pall): | 739.200             |



# Art. 2406 PP



|                   |                           |           |            |
|-------------------|---------------------------|-----------|------------|
| <b>FEATURES</b>   | Shape                     | Round     |            |
|                   | Volume brimful            | 300 ml    | ± 7 ml     |
|                   | Volume under lid          | 250 ml    | ± 7 ml     |
|                   | Height of the cup         | 100 mm    | ± 0,5 mm   |
|                   | Max.burden on the cup     | 70 N      |            |
|                   | Dimension                 | Ø75 x 100 |            |
| <b>WEIGHT</b>     | Cup                       | 6,4 g     | ± 0,40 g   |
| <b>DECORATION</b> | Cup                       | YES       | Dryoffset  |
|                   |                           | NO        | PVC sleeve |
| <b>PACKING</b>    | Pallet: 1. dimension      | 1200x800  |            |
|                   | 2. weight                 | 196 kg    |            |
|                   | 3. height                 | 200 cm    |            |
|                   | Pcs/pallet:               | 24.750    |            |
|                   | Pcs/full truck (33 pall): | 816.750   |            |

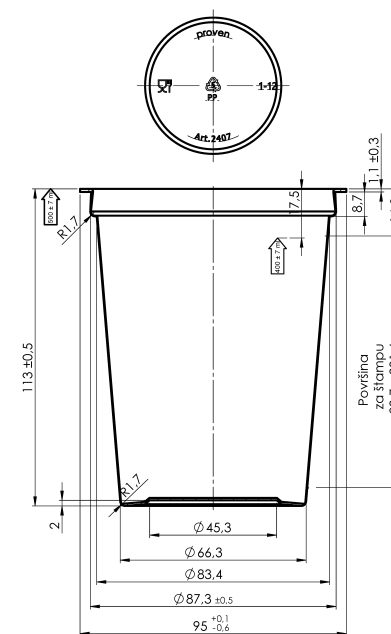




# Art. 2407 PP



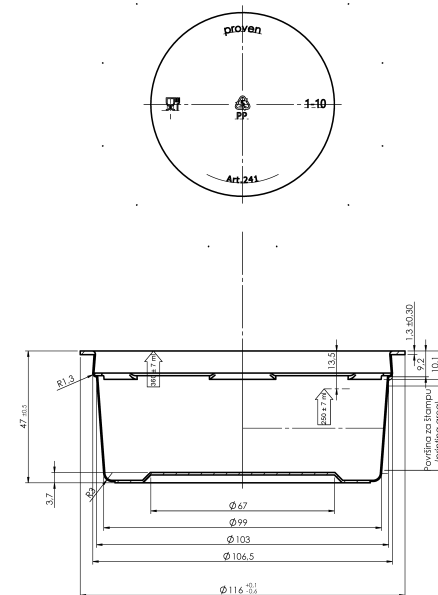
|                   |                           |                 |
|-------------------|---------------------------|-----------------|
| <b>FEATURES</b>   | Shape                     | Round           |
|                   | Volume brimful            | 500 ml ± 7 ml   |
|                   | Volume under lid          | 400 ml ± 7 ml   |
|                   | Height of the cup         | 113 mm ± 0,5 mm |
|                   | Max.burden on the cup     | 70 N            |
|                   | Dimension                 | Ø95 x 113       |
| <b>WEIGHT</b>     | Cup                       | 10,1 g ± 0,50 g |
| <b>DECORATION</b> | Cup                       | YES Dryoffset   |
|                   |                           | NO PVC sleeve   |
| <b>PACKING</b>    | Pallet: 1. dimension      | 1200x800        |
|                   | 2. weight                 | 195 kg          |
|                   | 3. height                 | 200 cm          |
|                   | Pcs/pallet:               | 15.552          |
|                   | Pcs/full truck (33 pall): | 513.216         |



# Art. 241 PP



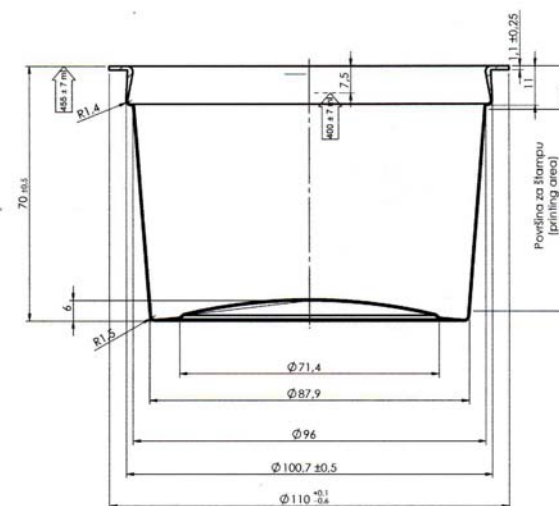
|                   |                           |           |            |
|-------------------|---------------------------|-----------|------------|
| <b>FEATURES</b>   | Shape                     | Round     |            |
|                   | Volume brimful            | 360 ml    | ± 7 ml     |
|                   | Volume under lid          | 250 ml    | ± 7 ml     |
|                   | Height of the cup         | 47 mm     | ± 0,5 mm   |
|                   | Max.burden on the cup     | 70 N      |            |
|                   | Dimension                 | Ø116 x 47 |            |
| <b>WEIGHT</b>     | Cup                       | 12,0 g    | ± 0,50 g   |
| <b>DECORATION</b> | Cup                       | YES       | Dryoffset  |
|                   |                           | NO        | PVC sleeve |
| <b>PACKING</b>    | Pallet: 1. dimension      | 1200x800  |            |
|                   | 2. weight                 | 164 kg    |            |
|                   | 3. height                 | 200 cm    |            |
|                   | Pcs/pallet:               | 8424      |            |
|                   | Pcs/full truck (33 pall): | 277.992   |            |



# Art. 2422 PP



|                   |                           |                 |
|-------------------|---------------------------|-----------------|
| <b>FEATURES</b>   | Shape                     | Round           |
|                   | Volume brimful            | 500 ml ± 7 ml   |
|                   | Volume under lid          | 400 ml ± 7 ml   |
|                   | Height of the cup         | 70 mm ± 0,5 mm  |
|                   | Max.burden on the cup     | 70 N            |
|                   | Dimension                 | Ø 110 x 70      |
| <b>WEIGHT</b>     | Cup                       | 12,0 g ± 0,50 g |
| <b>DECORATION</b> | Cup                       | YES Dryoffset   |
|                   |                           | YES PVC sleeve  |
| <b>PACKING</b>    | Pallet: 1. dimension      | 1200x800        |
|                   | 2. weight                 | 142 kg          |
|                   | 3. height                 | 200 cm          |
|                   | Pcs/pallet:               | 10.584          |
|                   | Pcs/full truck (33 pall): | 349.272         |



Proven d.o.o. Sarajevo, Adema Buće br. 148, 71000 Sarajevo, Bosnia & Hercegovina;  
Tel: +387 33 65 14 07; +387 33 71 86 70; Fax: + 387 33 71 86 71; E-mail: [proven@bih.net.ba](mailto:proven@bih.net.ba); [jt@proven.com.ba](mailto:jt@proven.com.ba)